



ESD8

User Guide



Content

ESD8	4
Overview	4
Installation, Drawings	5
Frequency characteristics	6
Specifications	7
Accessories	8 - 9
Warranty · Service	10

ESD8

FULL RANGE
8 Ohms



Application

Purpose designed as a discreet portable passive loudspeaker for speech and music content

- Corporate presentations and functions
- Full range performance with addition of subwoofers
- Infills
- Close monitoring
- Fixed installations

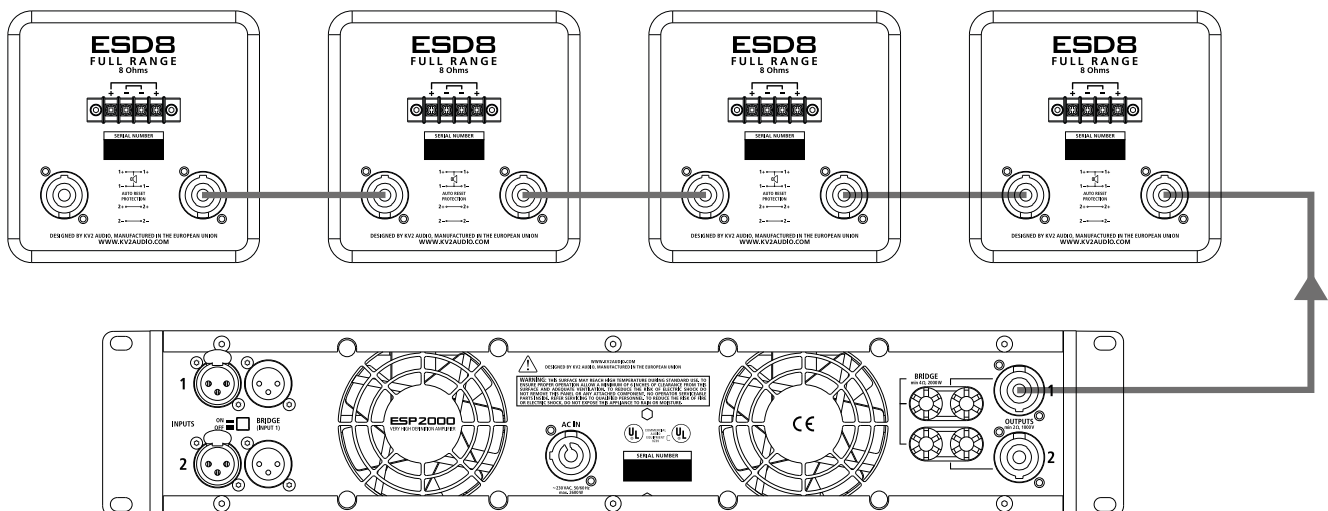
Introduction

The ESD8 is a compact passive 2-way, high output full-range loudspeaker incorporating an 8" trans-coil woofer and a 1" compression driver coupled to a wide dispersion horn. Presented conservatively in a unique angled low-profile Baltic birch enclosure and designed to present exceptional speech and music definition, the ESD8 provides a smooth hi fidelity response and delivers a natural sound quality and level that is superior to many larger competing products. Ideal as a main system speaker or as an in-fill for larger systems, the flexible ESD8 can be applied quickly and efficiently on podiums, stands or suspended.

Connection

The ESD8 features both Speakon (NL4) connectors and a terminal block. The connectors are interconnected in parallel to allow the "daisy chaining" of additional ESD8's.

PARALLEL CONNECTION OF THE ESD8 (8Ω) - TOTAL IMPEDANCE 2Ω



ESD8 · Overview

Installation

Installations should be carried out using KV2 Audio's horizontal or vertical U brackets. They are mounted vertically using M10 points located on the side of the cabinet or in the top handle and bottom M10 plate (supplied with horizontal bracket) for horizontal fixing and to a mounting post with a diameter of 35 mm using a support flange.

The ESD8 also features a 35 mm speaker pole mount adapter housed at the bottom of the cabinet for use with conventional speaker stands and poles.

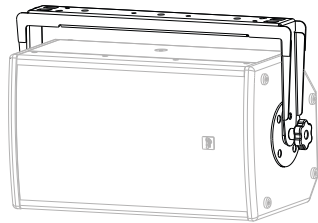
Drawings

part name:

ESD8 "U" HORIZONTAL BRACKET

part number:

KVV 987 422

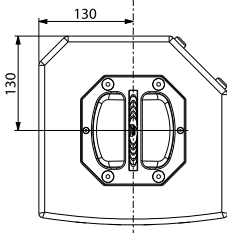
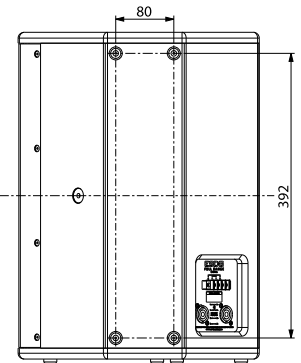
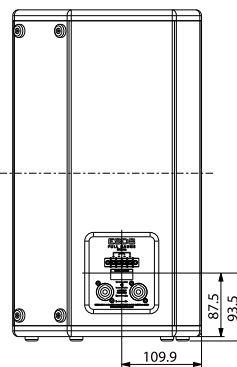
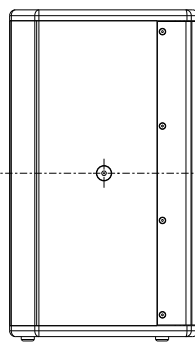
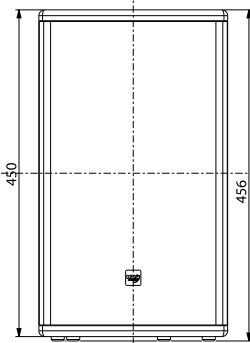
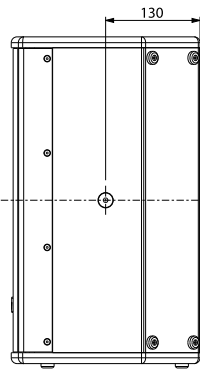
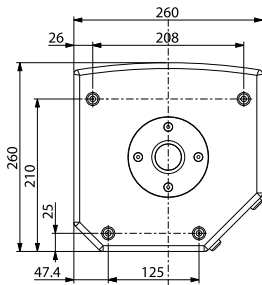
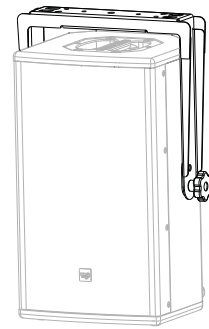


part name:

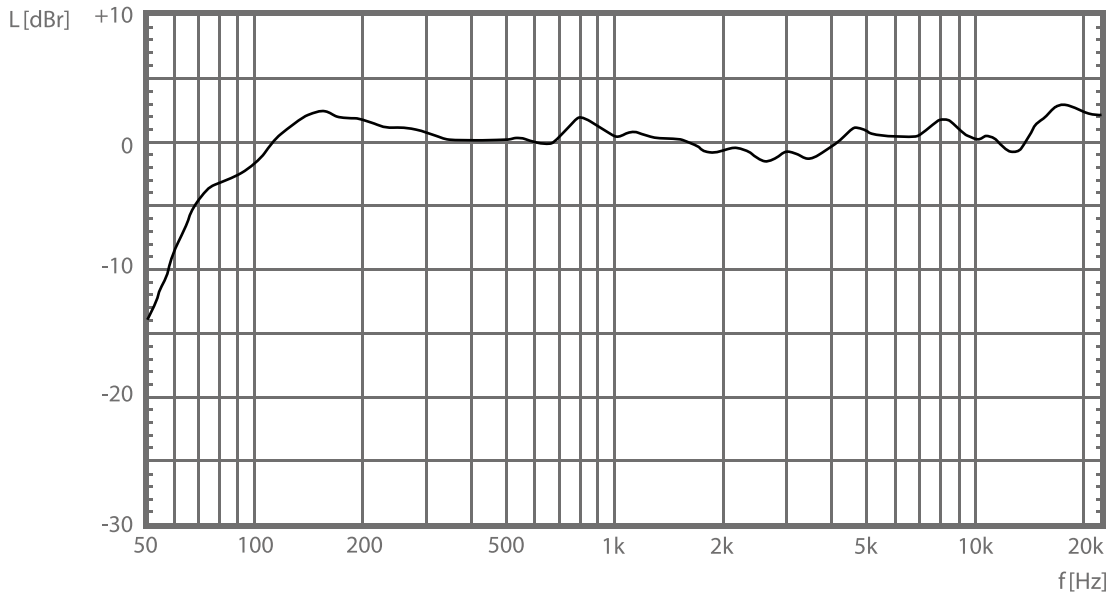
ESD8 "U" VERTICAL BRACKET

part number:

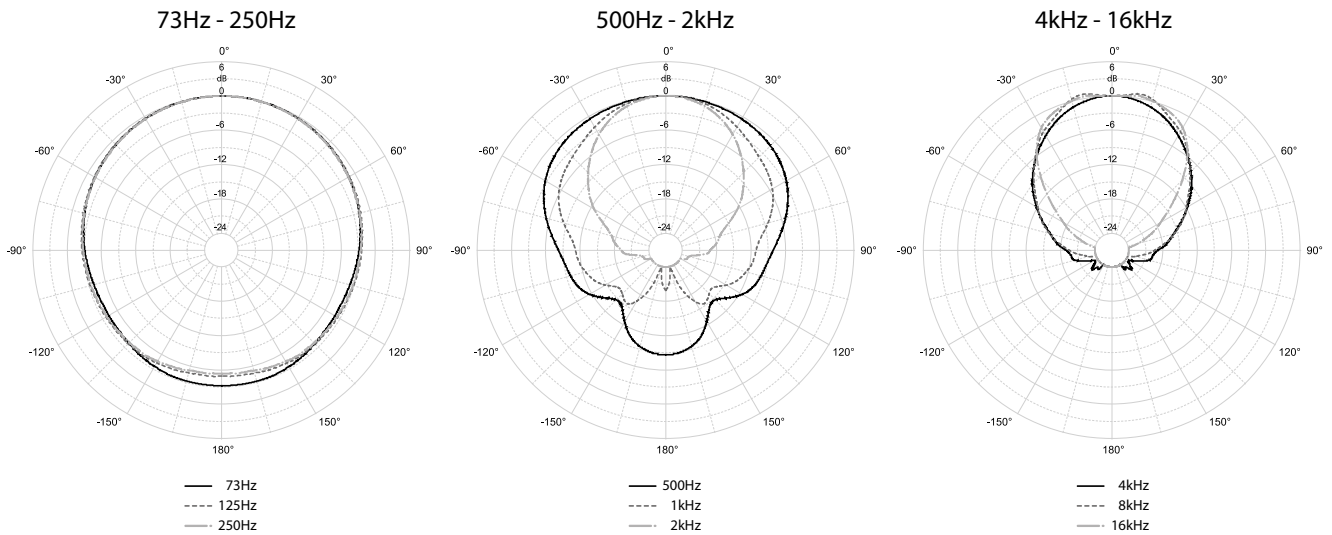
KVV 987 421



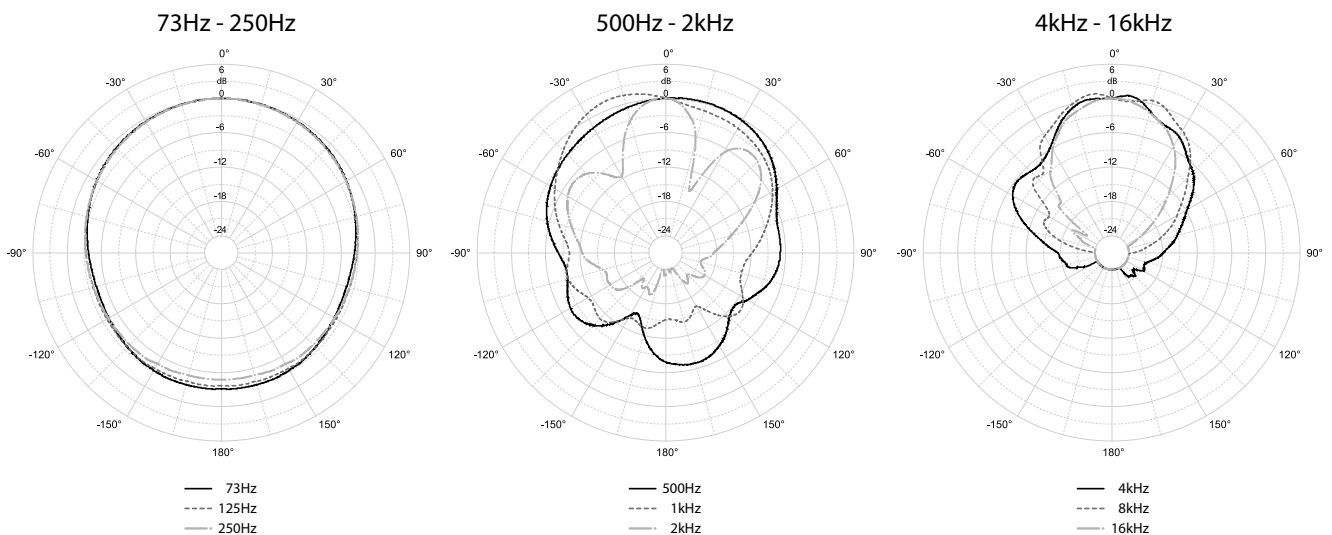
Frequency response



Horizontal Polarplots



Vertical Polarplots



Specifications

System Acoustic Performance

Max SPL Long-term	120dB
Max SPL Peak	126dB
-3dB Response	80Hz to 20kHz
-10dB Response	62Hz to 28kHz
Recommended Power	275W
Sensitivity	94dB
Impedance	8Ω
Crossover Point	2.2kHz

High Frequency Section

Acoustic Design	Horn Loaded
High Horn Coverage Horizontal / Vertical	100° x 100°
Rotatable Horn	Symmetric
Throat Exit Diameter / Diaphragm Size	1" / 1.75"
Diaphragm Material	Titanium
Magnet Type	Neodymium
Protection	RMS Limiter

Low Frequency Section

Acoustic Design	Front Loaded, Bass Reflex
Number of Drivers	1
Woofer Size / Voice Coil Diameter / Design	8" / 2" / Trans coil
Diaphragm Material	Epoxy Reinforced Cellulose
Magnet Type	Neodymium
Protection	Thermal breaker - auto reset

Speaker Input

Speaker Input	2x Neutrik Speakon®, Terminal Block
---------------	-------------------------------------

Cabinet

Cabinet Material	Baltic birch
Handles	1
Color	"Orange peeled" Matt Black or any RAL

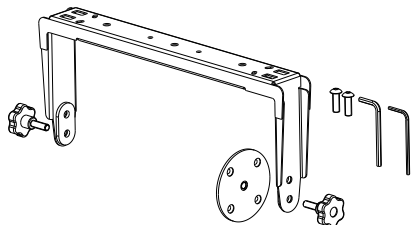
Physical Dimensions

Height	456 mm (17.95")
Width	260 mm (10.23")
Depth	260 mm (10.23")
Weight	13 kg (28.6lbs)

HORIZONTAL BRACKET

Horizontal Bracket for ESD8

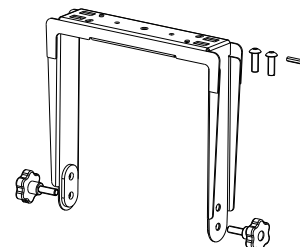
part name:
ESD8 Horizontal Bracket
 part number:
KVV 987 422
 description:
 - black
 - including two connection bolts and bracket



VERTICAL BRACKET

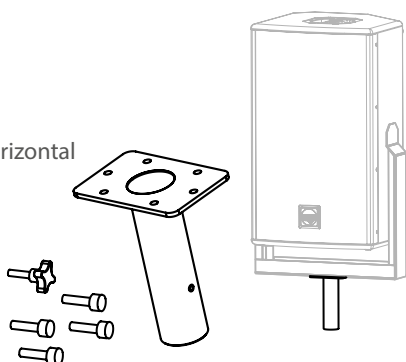
Vertical Bracket for ESD8

part name:
ESD8 Vertical Bracket
 part number:
KVV 987 421
 description:
 - black
 - including two connection bolts



Bracket Top Hat Adapter

part name:
Top Hat Adapter
 part number:
KVV 987 090
 description:
 - for vertical and horizontal brackets
 - including bolts
 - black



Speaker pole - universal

part name:
KV2-H
 part number:
KVV 987 292
 description:
 - Heavy duty telescopic speakerpole
 - 0,735 to 1,23 m
 - diameter 35 mm
 - weight 2,2 kg
 - max. load 50 kg
 - bottom terminal M20
 - matte black



Speakon speaker cable 4.15

part name:
CABLE SPEAKON 4.15
 part number:
KVV 987 326
 description:
 - 4 wire speaker cable
 - Speakon NL4 connectors
 - 1,5m (5ft)



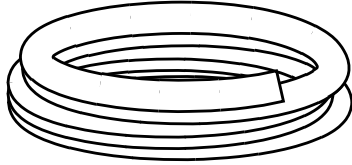
Speakon speaker cable 4.40

part name:
CABLE SPEAKON 4.40
 part number:
KVV 987 327
 description:
 - 4 wire speaker cable
 - Speakon NL4 connectors
 - 4m (13ft)

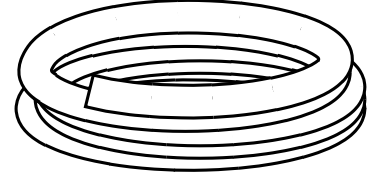


Speaker cables

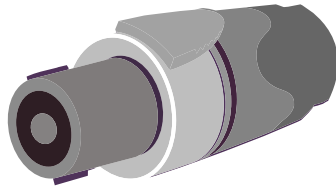
part name:
**1m - round flexible speaker cable,
 cross section 2 x 1.5mm**
 part number:
WX 002



part name:
**1m - round flexible speaker cable,
 cross section 4 x 2.5mm**
 part number:
WX 003



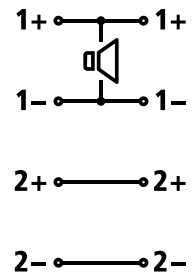
part name:
SPEAKON NL4
 part number:
KA 027



part name:
ESD, Speakon NL4 wiring

positive pin
 (1 +, 2 + parallel)
 negative pin
 (1 -, 2 - parallel)

Speakon NL4 wiring



Recommended maximum speaker cable length

MINIMUM CROSS SECTION [mm ²]	LENGTH [m], impedance 4Ω	LENGTH [m], impedance 8Ω	LENGTH [m], impedance 16Ω
1.5	8	15	30
2.5	15	30	60
2 x 2.5	20	40	90
4	25	50	100

Warranty

Your ESD8 is covered against defects in material and workmanship.

Refer to your supplier for more details.

Service

In the unlikely event that your product develops a problem, it must be returned to an authorized distributor, service centre or shipped directly to the KV2 Audio factory. Because of the complexity of the design and the risk of electrical shock, all repairs must be attempted only by qualified technical personnel.

If the unit needs to be shipped back to the factory, it must be sent in its original carton. If improperly packed, the unit may be damaged.

To obtain service, contact your nearest KV2 Audio Service Centre, Distributor or Dealer.



The Future of Sound.
Made Perfectly Clear.

KV2 Audio International

Nádražní 936, 399 01 Milevsko
Czech Republic

Tel.: +420 383 809 320

Email: info@kv2audio.com

www.kv2audio.com

KVV120159-00-01-0