

Product Overview

KV2 Control & Diagnostics Tool
Constant Power Point Source Array
Large Format Point Source System
Active Driven Systems
Passive Speakers & Amplifiers
Active Speakers
Stage Monitors
Processors
500 Series
DI Boxes





George Krampera

Founder, Chief Engineer, Legendary Pro Audio Pioneer

Product Overview

KV2 Control & Diagnostics Tool

Constant Power Point Source Array / **VHD5**

Large Format Point Source System / **VHD**

Active Driven Systems / **SL / ESR / ES**

Passive Speakers & Amplifiers / **ESD / ESP / CS**

Active Speakers / **EX**

Stage Monitors / **ESM**

Processors / **LD4 / SD8 / SAC2 / SDD3 / COMPEX / VHD PRE-EQ**

500 Series & DI Boxes / **JK**

Technical Specifications

Introducing KV2 Control & Diagnostics Tool

Superior Sound with Total Control

For years people have enjoyed the superior audio quality of KV2's Super Analog amplifiers, however for certain applications where control was needed, they were forced to use other third party products, relying on basic digital electronics and DSP to give some control, which unfortunately also affected the sound.

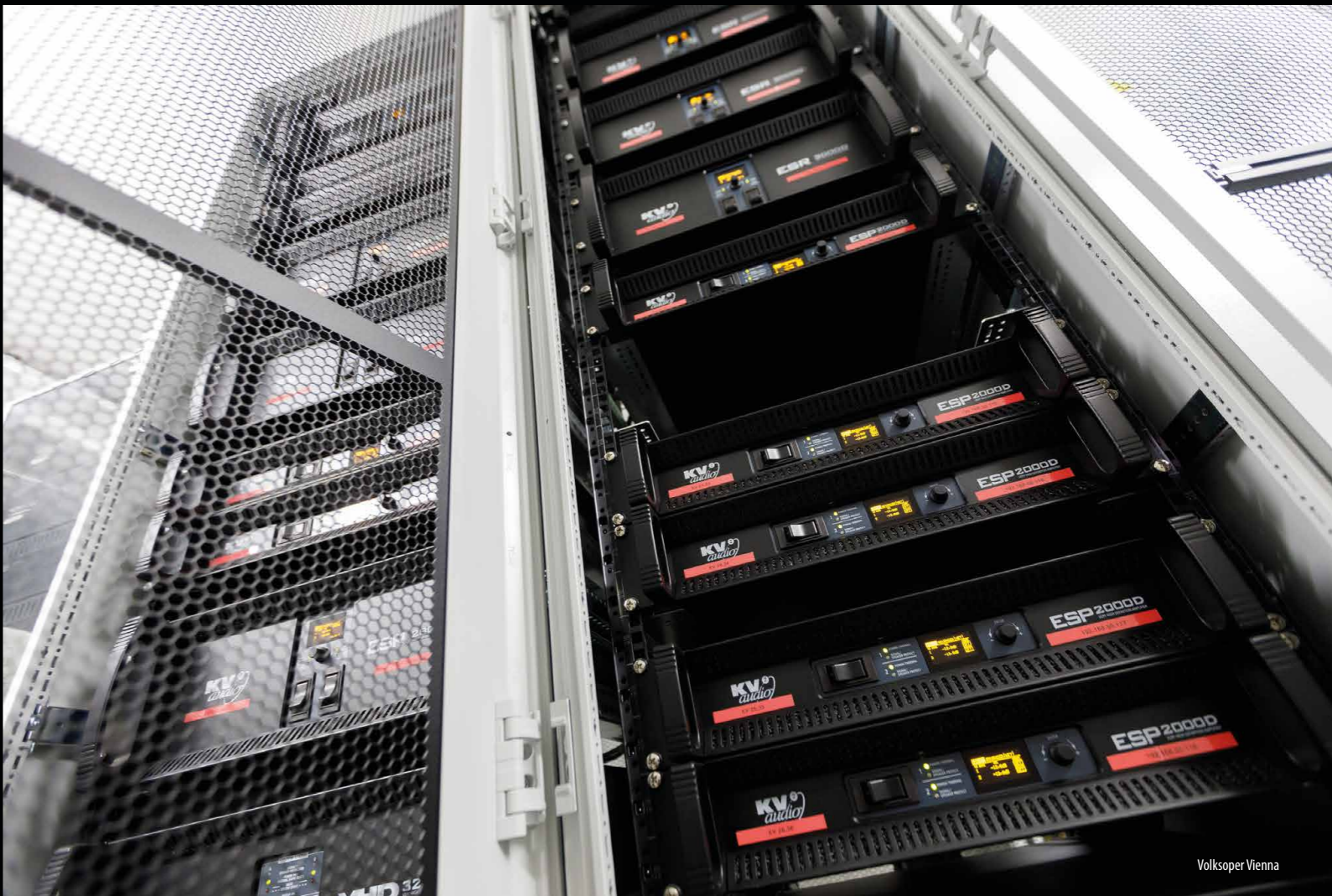
Now, in another industry first from KV2 we are able to offer the Highest quality Super Analog engineering, with the added convenience of digital control and diagnostics.

Our new "D series" amplifiers give you the option to set up gain, operate mutes, configure the limiters, or select filter, EQ and bridge modes depending on the model. Whilst the diagnostics section will give you information on the temperature of heatsinks, mains voltage, real time health checking and the output levels relative to limiting.

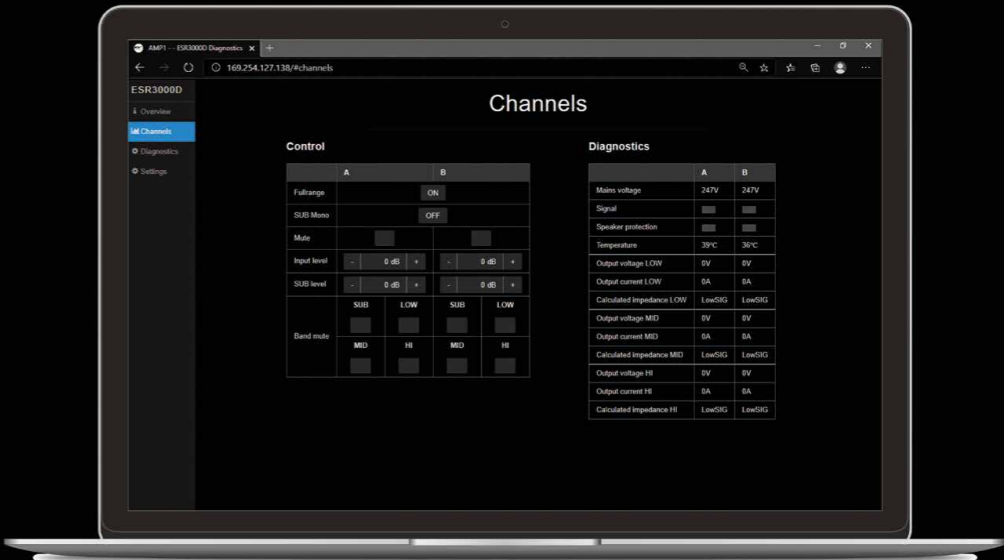
With our new KV2 Control & Diagnostics Tool you can also set all your amplifiers individually or as a group including saving and recalling presets or show files.

Featured amplifiers with a built-in KV2 Control & Diagnostics Tool:

- ESP2000D
- ESR28000D / ESR3000D
- SL3000D
- VHD3200D



Volksooper Vienna



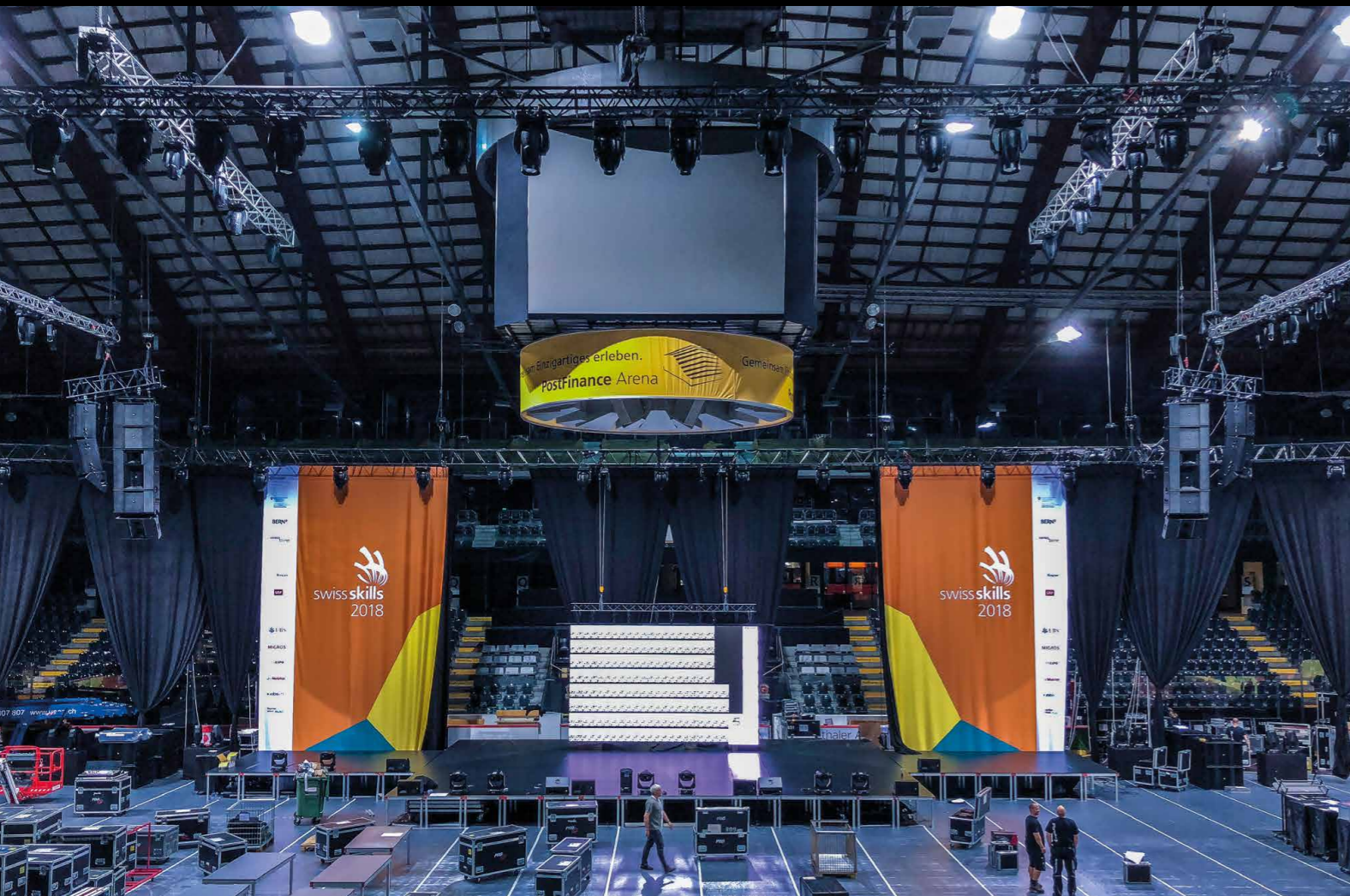
Set up Gain • Operate Mutes • Configure the Limiters • Select Filters, EQ and Bridge modes
Save and Recall Presets for all your amplifiers

Constant Power Point Source Array

VHD5

KV2 Audio's philosophy has always been to embrace the principles of point source speaker system design to provide optimum sound quality and coverage for applications and audiences of all sizes. The challenge for KV2 in building a large point source system for audiences of 50,000 people plus was to reproduce the low mid energy that certain line arrays provide, through the summing of multiple drivers, whilst maintaining the key benefits of point source technology. These benefits include minimal destructive interference in the higher frequency range, accurate impulse response and superior sound.

Utilizing highly advanced point source speaker design, extremely efficient power management amplifier technology and totally unique hybrid signal processing, KV2 has created the first major advancement in large-scale concert sound reinforcement since the development of the Line Array. The VHD5.0 Constant Power Point Source System is a true feat of engineering. Over five years in development it brings the benefits of point source technology to large-scale concert sound reinforcement. The system delivers audio over large areas with clarity and definition simply not achievable from the digitally processed line arrays that are so commonly used today.



VHD8.10 Low Mid

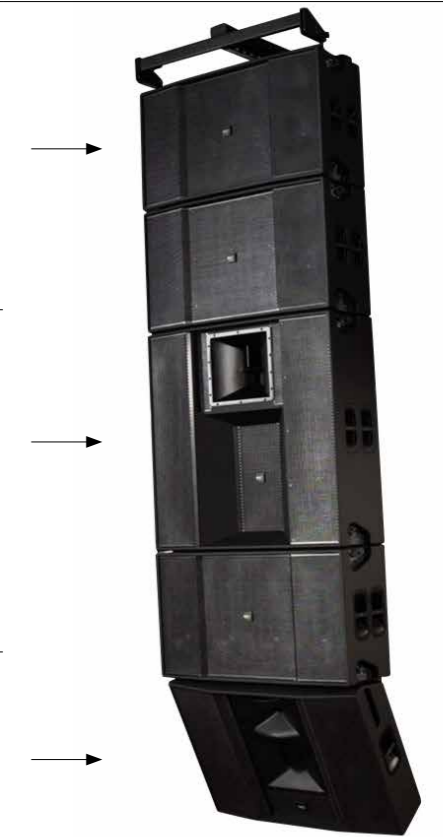
To provide the required energy in the low mid needed to cover very large audiences, KV2 developed the VHD8.10 Low Mid Expansion Box. This enclosure carries eight front-loaded 10" speakers and three of these cabinets are added to each VHD5.0. This provides a total of thirty-two 10" speakers giving the extra headroom needed in the low mid band and extended projection of these frequencies over distance.

VHD5.0 Mid Hi

The VHD5.0 is a 3-way enclosure handling low mids, mids and highs over a frequency range from 45Hz through to 20kHz. It incorporates eight front-loaded 10" low mid drivers, six horn-loaded 8" mid range drivers and three 3" NPVD (Nitrate Physical Vapour Deposition) Titanium compression drivers on a custom designed, manifold horn assembly with summing waveguide. With the capacity to run full range down to 45Hz the VHD5.0 is usually crossed over at 70Hz to the VHD4.21 Active Sub Bass Modules.

VHD5.1 Downfill

VHD5.1 is a dedicated downfill enclosure, used with the VHD5 system for the largest events and audiences from 10,000 upwards, ensuring that all audience members enjoy a consistent experience venue wide without the need for delay systems. A 3-way design featuring a 3" high frequency compression driver with NPVD treated dome assembly; one horn loaded 8" mid range woofer featuring AIC technology and six front loaded 10" low mid woofers.



Amplifiers

VHD5000, VHD5000S & VHD5100

The VHD5000 amplification and control unit is specifically designed to power the VHD5 loudspeaker system and contains two Class AB amplifiers totaling 900-watts for the high frequencies and a 1200-watt Class H amplifier for the mids. It also controls the VHD5000S which houses two 2500-watt Class G amplifiers that power the low mids in the system.

The VHD5000S is a rack mounted, high efficiency, low mid amplifier, designed in conjunction with VHD5000 to power the VHD5 low mid loudspeaker system.

The VHD5100 is a two channel, 3-way, active control and amplification system designed to independently control one VHD5.1 Downfill and an additional ESR215MkII fill loudspeaker. It houses all signal processing and amplification, as well as providing a crossover function, if required, to add a fill channel subwoofer.

A front panel touch screen allows easy control, level adjustment and muting of the frequency bands and full adjustment of the digital delay lines and other parameters on board. Control can also be done remotely via Ethernet or Wi-Fi utilizing our proprietary K-NET networking.



Large Format Point Source System

VHD Series

The Original VHD High Performance Touring and Installation system from KV2 Audio has been designed to revolutionize the concert sound market by offering unparalleled quality, power and coverage, with huge cost savings in terms of size, weight, transportation, storage and set up time.



VHD2.0

A powerful long throw system for audiences of up to 20,000 people without requirement for additional delay systems. A 3-way design featuring a 3" compression driver with NPVD treated dome assembly, two horn loaded 8" speakers featuring AIC technology and two horn loaded 12" mid bass speakers. All speakers employ neodymium magnets to increase force, improve control and lower weight. The VHD2.0 has an 80° horizontal and 40° vertical dispersion and left and right versions of the speaker are offered in order to create larger format vertical arrays of the mid high system.



VHD1.0

The VHD1.0 downfill enclosure features a single 12" mid-bass speaker, an 8" Trans Coil mid-range woofer and the same 3" compression driver with NPVD treated dome assembly as the VHD2.0 on a wide angle 110° horizontal by 40° vertical horn. The rear of the box has been angled for use as a downfill with the VHD2.0. Like the VHD2.0, VHD1.0 is available in left and right versions for downfill applications.



VHD1.21

Single 21", Low Q band-pass subwoofer system that adds extension and weight for applications where you want to feel, as well as hear, very high definition audio working down to 23Hz. With an efficiency for two boxes of 102dB, it shares the same footprint as the other VHD subwoofers in a compact, lightweight easily transported package. Alongside the VHD2.16, it forms part of a remarkable 5-way system.



VHD2.16

The VHD2.16 double 15" subwoofer is a development of KV2 Audio's ES2.5 design that has become a standard for compact, high output subwoofer devices. Acoustical design is based on extreme loading of asymmetrical chambers delivering exceptional output and control. The VHD2.16 delivers output in excess of 140dB when configured in a pair. It also functions as a very effective upper bass cabinet when used alongside the ultra low frequency VHD1.21 or VHD2.21 subwoofers as part of a 5-way system.



VHD2.18J

The VHD2.18J is a direct radiating bass-reflex speaker containing two 18" high performance transducers. These 18" transducers are designed to withstand very high power levels. The high efficiency, bass-reflex design of the VHD2.18J produces more output than many comparable double 18" enclosures and integrated proprietary flyware allows for fast rigging of multiple cabinets when subwoofers are needed to be flown. An ideal subwoofer for any application where direct radiating bass reproduction is required.



VHD4.18

The VHD4.18 is a quad 18" subwoofer system comprising of four individual loudspeaker cabinets. The objective is to make the system easy to transport and setup. When assembled, the VHD4.18 system becomes a high efficiency neodymium subwoofer system with immense output. The system was designed with very high sensitivity in mind; it provides 110dB at 1W/1m and a tremendous output of 152dB when running at full power. Each cabinet incorporates a large port area that becomes an optimized horn aperture when all four cabinets are stacked together. The VHD 4.18 subwoofer system delivers extreme output and controlled low frequency resolution.



VHD2.21

Originally designed for Super Live Audio as part of a VHD system, the VHD2.21 is voiced for Live Music but also excels in the field of Club and Dance Music. In this situation it works very effectively, operating down to 25Hz alongside other VHD products, the smaller ES range, or as an incredible stand-alone subwoofer that can complement any other manufacturers systems.



VHD4.21

Housing two newly developed large format 21" Woofers the VHD4.21 Active can power an additional VHD4.21 Passive and deliver up to 14,000 Watts of peak power whilst connected to a standard 16A wall socket (at 230V). Producing an impressive performance, via exceptional woofer control, the dynamic presentation, definition and speed of this subwoofer challenges industry beliefs and displays qualities not commonly associated with large format subwoofers.



Amplifiers

VHD2000

The VHD2000 is the amplification and control unit for the VHD2.0 System. It is a 3-way, rack-mounted unit containing high frequency, mid frequency and mid bass amplifiers. It also houses all processing, electronics and control for the dedicated VHD3200 subwoofer amplifier. Our own hybrid signal processing utilizes the very best technology available from both the analog and digital worlds to offer complete audio system control, equalization, overdrive protection, thermal protection and user adjustable set up parameters. Time alignment and phase correction is done via KV2's revolutionary 20MHz digital delay line, boasting the highest sampling rate of any digital speaker processor available.



VHD3200 / VHD3200D

The VHD3200 rack mounted subwoofer amplifier provides power for VHD subwoofers. The VHD3200 contains two separate 1600W amplifiers with individual power supplies, signal paths and I/O within a single four rack space chassis. VHD3200D version of the amplifier features KV2's Control and Diagnostics Tool.



Active Driven Systems

SL Series

The SL412 and SL6.10 loudspeakers incorporate eye catching slim and stylish cabinet design. Designed to integrate either externally through simple wall mounting, suspension, ground stacking, or internally within wall cavities, the SL412 and SL6.10 can be designed and supplied with custom colors, grill templates and logos offering a flexible and truly designer integrated product.



SL412

Using KV2 Audio's VHD technology, the SL412 loudspeaker utilizes four 12" low mid components and a wide dispersion horn housing a single 8" mid-range and 3" large format NPVD compression driver. This mid-high horn has an extremely coherent wide horizontal dispersion of over 110° while the purpose designed 4 x 12" configuration keeps a tight pattern control dramatically reducing reflections within the 300 to 800Hz frequency range.



SL6.10

Following on from our successful SL2.15 subwoofer, the latest generation SL sub, the SL6.10 incorporates six 10" directly radiating speakers which radically improve dynamics and definition from the same sized enclosure. Built to integrate aesthetically with the SL412, The SL6.10 produces accurate bass from its slim cabinet design. Bass response is enhanced by coupling or even tripling the cabinets, particularly when the SL6.10 is used against or within a wall, providing optimum output for its compact footprint. It also combines acoustically with the Ultra Low Frequency VHD1.21 and 2.21 subwoofers as part of a five way active driven system.



Amplifiers

SL3000 / SL3000D

The SL3000 amplifier is a stereo 3-way, amplification and control unit specifically designed for the SL412. The SL3000 drives and controls one SL412 per channel and each channel utilizes a high efficiency, 1000-watt current enhancing switching amplifier with a linear active filter design for the low mid section, a 200-watt class AB amplifier for the mid-range and a similar 100-watt design for the high frequencies. The SL3000 houses all signal processing and amplification as well as providing control for external subwoofer configurations if required. SL3000D version of the amplifier features KV2's Control and Diagnostics Tool.



Active Driven Systems

ES Series

As the first product developed by KV2 and continually refined over the last decade, the ES series has become renowned for its unique and versatile capabilities. Its performance has amazed audio professionals around the globe, staggered by the output and clarity of such a compact yet powerful system. The ES Series is an embodiment of KV2 Audio's design philosophies.



ES1.0

The ES1.0 is a 3-way, very high output, active-driven, mid-high / mid-bass module designed as part of a complete ES speaker system and driven by the EPAK2500/R amplification and control unit. The ES1.0 is compact, lightweight and can be combined with a variety of ES subwoofers. As a single system it offers one of the highest quality portable sound reinforcement solutions on the market today. When coupled with another ES1.0 (running two horizontally per side) it becomes an even more powerful tool, providing peak SPL of 142dB and a throw of up to 40metres for applications of up to 3,000 people.



ES1.5

The ES1.5 is a single 15", extremely compact, high output subwoofer weighing just 30.8 kg (67.9lbs). Designed as a part of the ES speaker system when used alongside the ES1.0 singularly or in multiples of up to three, the system is powered by the EPAK2500/R amplification and control unit ensuring fast, easy set up with perfect balance and complete control. The EPAK2500/R also allows up to two ES1.5's to be used alongside an ES1.8, where the ES1.5 can either be flown alongside an ES1.0 or ground stacked with the ES1.8.



ES1.8

The ES1.8 is a high-output, reflex horn loaded, single 18" subwoofer, designed as a part of the ES speaker system. It provides tight, up front, low frequency extension with authority, attack and definition. Designed to be used in pairs, or with up to two ES1.5, the ES1.8 can achieve high output levels consistently and safely. Alongside the ES1.0 and EPAK2500/R, the ES1.8 offers a very firm foundation on which to build a powerful ES system.



ES2.5 / ES2.6

The ES2.5 (4 ohms) and ES2.6 (8 ohms) are double 15", high output subwoofers designed as a part of the ES speaker system. Using new concepts in twin asymmetrical acoustic chamber design they deliver very high speaker loading and intense output from a relatively small cabinet footprint. Reproducing low frequencies with very high transient content they are ideal for use in live applications or as part of a 5-way ES system utilizing VHD1.21 or VHD2.21 subwoofers. Together with the ES1.0 and EPAK2500/R, the ES2.5/2.6 delivers the highest dynamic range of any other comparable system providing new levels of clarity, depth and resolution.



Amplifiers

EPAK2500 & EPAK2500R

The EPAK2500 is a 4-way, active control and amplification unit specially designed in a road case to drive one side of an ES system whilst the EPAK2500R is the rack mount version. The meticulously designed control and electronics inside the EPAK 2500/R constantly monitor and preserve the relationship between each amplifier and component, delivering exactly the right amount and type of power throughout the system. A multi position switch allows you to select from various subwoofer combinations with subwoofer, HF and overall level attenuation all user adjustable. Both the EPAK2500 and EPAK2500R utilize KV2's industry leading 20MHz sampling for on board time alignment and phase correction of all components in the ES system.



Active Driven Systems

ESR Series

The ESR series is specifically designed for applications where a one box solution is needed to give clear, detailed and full-range reproduction over a wide area. The ESR212 and ESR215 are three-way, full range enclosures with wide dispersion characteristics. They can be used vertically for Theatre, House of Worship and Leisure Venue installations or horizontally mounted to give excellent coverage over tiered seating areas for stadium and grandstand type applications.

Similar to our popular ES, VHD and SL series the ESR cabinets are three way actively driven by proprietary amplifiers that deliver fully equalized, time aligned and accurate signal to each of the components. Two ESR cabinets can be driven by a single stereo ESR2800 or ESR3000 unit which house all signal processing and amplification as well as providing control for external subwoofer configurations if required.

ESR212

The ESR212 is a full-range 3-way loudspeaker system designed for use with the ESR2800 tri-amplified stereo electronic control pack. The ESR212 loudspeaker system features state of the art transducer design. Comprising of two 12" woofers, a 6" mid-range driver and a 1" compression driver, the ESR212 delivers full-range high definition audio over large spaces with a dispersion of 90° horizontal by 40° vertical. With a fully rotatable horn the ESR 212 can be installed either vertically or horizontally.

ESR215MkII & ESR215S

The ESR215MkII is a large format full-range 3-way loudspeaker system with a wide horizontal dispersion of 110°. Designed for use with the ESR3000 tri-amplified stereo electronic control pack the ESR215MkII loudspeaker system features two 15" woofers, an 8" mid-range driver and the same large scale NPVD 3" compression driver found in KV2 Audio's VHD mid-hi enclosures. With a wide dispersion and smooth frequency response the ESR215MkII is ideal for theatre or stadium applications. The ESR215S is a slim version of ESR215MkII (width 450 mm vs 470 mm and depth 400 mm vs 500 mm).



ESR106

The ESR106 is an active driven 3 way system employing a unique column array of multiple 6" woofers for unparalleled high quality vocal and music reproduction in challenging acoustical spaces and ambient environments. Utilising 8 x 6" woofers, 2 x 6" mid bass woofers and a single 1" high frequency driver mounted on a wide dispersion horn, the ESR106 is constructed to represent one large point source, with each part of the system positioned so that it is proportional in size to the frequency wavelength it produces, thus the radiated power of each bandwidth remains consistent and balanced in relevance throughout the overall frequency response. The ESR106 has a controlled coverage at low and mid frequencies to reduce indoor reflections. The ESR106 is controlled and driven by a dedicated ESR2600D amplifier, using KV2 Audio proprietary SLA technology.

ESR2600D

The ESR2600D is a two channel (stereo) three-way, active control and amplification system specially designed for the KV2 Audio ESR106 full range loudspeaker system. It houses all signal processing and amplification, as well as providing control and crossover functions for adding external subwoofer cabinets if required, utilizing external amplifiers. The ESR2600D is now configurable via the front panel or remotely using the KV2 Control & Diagnostics Tool.



Amplifiers

ESR2800 & ESR3000MkII / ESR2800D & ESR3000D

The ESR2800 & ESR3000MkII are stereo 3-way, amplification and control units specifically designed for the ESR212 and ESR215MkII full-range loudspeakers. They house all signal processing and amplification needed as well as providing control and crossover function for external subwoofers if required. Each unit incorporates six amplifiers consisting of two 100-watt, Class AB, push pull, low intermodulation high frequency amplifiers, two 200-watt, Class AB, push pull, low intermodulation mid-range amplifiers and two 1000-watt, high-efficiency, current-enhancing switch mode technology bass amplifiers. The ESR2800 and ESR3000MkII's stereo configuration powers two ESR212 and ESR215MkII cabinets respectively. The ESR2800D & ESR3000D versions of the amplifier feature KV2's Control and Diagnostics Tool.



Passive Speakers & Amplifiers

ESD Series

In developing the ESD series of passive loudspeakers KV2 designed a unique revolutionary analog delay line circuit that provides time alignment and phase correction passively, substantially improving clarity and definition. With no outboard processing required, the tailored neutral response and sensitivity of the different enclosures allows for a wide variety of applications.

The Baltic Birch cabinets present a pleasing aesthetic which matches the audio performance. Holding true to our philosophy of achieving the best sound quality possible, we have created a speaker range that incorporates all of the economical and easy installation aspects of passive speakers without the need for expensive external processors.



ESD Cube

The ESD Cube is a very high quality ultra compact low profile 5" passive loudspeaker utilizing a unique Trans Coil design for superior vocal reproduction, extended high frequency response, increased dynamic range and the lowest distortion of any comparable speaker in its class. Housed in an aluminium enclosure its compact dimensions make it extremely discreet for peripheral reinforcement in theatres, bars, clubs, churches, museums and tourist attractions.



ESD5

The ESD5 is a 2-way full-range, ultra-compact low profile passive loudspeaker with performance that defies its size. The ESD5 is perfect for discreet installations and audiovisual presentations. The carefully selected trapezoidal design allows neat installation directly to ceilings via the dedicated ceiling plate whilst also excelling in under balcony or front fill applications in theatres and performing arts spaces. The ESD5's high impedance capability means that up to sixteen units can be run from a single suitable quality stereo amplifier.



ESD25

The ESD25 is a 2-way full-range, ultra-compact low profile passive loudspeaker with increased lower bass extension than the smaller ESD5. Its opposing driver design assists with pattern control of the low mid frequencies reducing reflections in reverberant spaces and improving intelligibility. Delivering exceptional clarity for speech and program reproduction the ESD25 is ideal for corporate presentations, discreet installations, or fill applications in theatres and performing arts spaces.



ESD6

The ESD6 is a 2-way full-range, compact passive loudspeaker with output that defies its size. Delivering amazing clarity for speech and program reproduction, the ESD6 is perfect for discreet installations and audio-visual presentations where sound quality is paramount but size also matters. The ESD6's high impedance capability means that up to sixteen units can be run from a single suitable quality stereo amplifier to provide high fidelity background reinforcement throughout a venue.



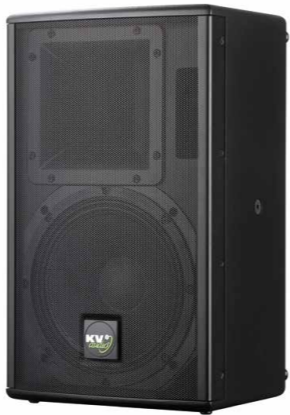
ESD8

The ESD8 is a compact passive 2-way, high output full-range loudspeaker incorporating an 8" trans-coil woofer and a 1" compression driver coupled to a wide dispersion horn. Presented conservatively in a unique angled low-profile Baltic birch enclosure and designed to present exceptional speech and music definition, the ESD8 provides a smooth hi fidelity response and delivers a natural sound quality and level that is superior to many larger competing products. Ideal as a main system speaker or as an in-fill for larger systems, the flexible ESD8 can be applied quickly and efficiently on podiums, stands or suspended.



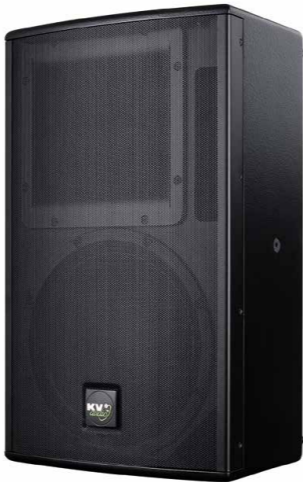
ESD10

The ESD10 is a 2-way full-range, high output passive loudspeaker incorporating a 10" Trans Coil woofer and rotatable wide dispersion 100° horizontal by 80° vertical horn. The ESD10 provides a smooth high fidelity response that delivers sound quality and level that is superior to many larger competing products. The ESD10 is ideal as a primary PA speaker with or without additional subwoofers or as in-fill for larger systems.



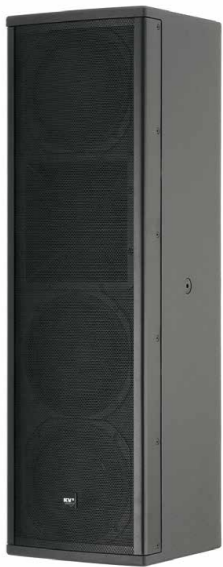
ESD12

The ESD12 is a 2-way full-range, high output passive loudspeaker that provides unmatched clarity and definition in a simple elegant package. The ESD12 utilizes a 12" Trans Coil woofer and the same 3" NPVD large format compression driver found in our flagship VHD products, which has one of the lowest distortion ratings in the world. Combined with our unique delay line technology the ESD12 delivers a beautifully balanced, phase coherent and accurate compact, 2-way passive solution that is adaptable to a wide range of applications.



ESD36

The ESD36 is a 3-way full-range, compact passive loudspeaker system for speech and music reproduction. The ESD36 features a 6" driver dedicated to high quality mid-range reproduction and a further two low frequency 6" drivers for enhanced bass extension with a wide dispersion 100° by 100° horn section housing a 1" compression driver. Delivering impressive full-range response the ESD 36 has an aesthetically pleasing narrow design ideal for House of Worship and corporate applications where space and sightlines need considering.



ESD15

The ESD15 is a 3-way full-range, high output passive loudspeaker that incorporates a unique coaxial 15" transducer with a 1.75" Nitride Titanium Neodymium Compression Driver on a wide dispersion 80° horizontal by 60° vertical horn. Whilst most coaxial speakers will try to cover the full frequency range, the ESD15's coaxial driver only covers bass and high frequencies leaving the all-important mid-range to a 6" neodymium speaker also mounted on a large 80° horizontal by 60° vertical horn. This resolves the issue of the 15" driver trying and failing to reproduce accurate mid-range, a common problem with conventional coaxial designs.



ESD1.10

The ESD1.10 is a compact passive 10" subwoofer featuring a high quality neodymium transducer. The smallest subwoofer within the KV2 range, it has been designed to compliment the ESD Cube creating a full range system when partnered with the ESD Cube and ESP1000 amplifier. With power handling of 500 watts the ESD1.10 is capable of delivering tight, fast and controlled bass response, at high output levels from a very compact cabinet and is ideal for any discreet low frequency applications alongside other KV2 Audio products.



ESD1.12

The ESD1.12 is a passive version of the active EX1.2MkII 12" subwoofer and features a high quality ferrite woofer. This subwoofer's low profile and size makes it ideal for discreet applications. With power handling of 600-watts the ESD1.12 is capable of delivering tight, fast, controlled bass response at high output levels from a compact cabinet.



ESD1.15

The ESD1.15 is a passive version of the active EX1.5 subwoofer featuring a single 15" ferrite woofer with power handling of 600-watts. Offering a peak SPL of 130dB the ESD1.15 produces considerable output yet in true KV2 style retains a compact footprint. Multiple ESD1.15's can be stacked together to create a powerful and scalable subwoofer system.



ESD1.18

The ESD1.18 is the passive version of the incredible active EX1.8. The ESD1.18 features a ferrite woofer with power handling capabilities of 1000-watts and makes a firm foundation from which to build an incredibly powerful ESD system, or as a stand-alone subwoofer to enhance any existing passive or active system.



Amplifiers

ESP1000

The ESP1000 is a 4-channel rack mountable power amplifier specifically designed for optimized performance with KV2 Audio's ESD Cubes and ESD1.10 subwoofers creating a full-range system. The unit contains four separate 250-watt amplifiers, four signal paths, inputs and outputs as well as limiting and a Cube equalization / filter section, switchable out when driving other standard ESD products.



ESP2000 / ESP2000D

The ESP2000 amplifier incorporates KV2's Super Live Audio design principles, delivering very low distortion characteristics, even under extreme operation. Equally at home as a reference amplifier in a high-end recording studio or driving a large-scale live audio system, the ESP2000 is a sonically superb unit featuring two 1000-watt Class H amplifier channels. The ESP2000D version of the amplifier features KV2's Control & Diagnostics Tool.



ESP4000

The ESP4000 builds on the ESP2000 and is an ultra high definition 4-channel rack mountable power amplifier from KV2 Audio, specifically designed for optimized performance with ESD loudspeakers, as well as with other passive systems. The ESP4000 features four 1000-watt Class H amplifier channels with two power supplies to ensure continuous delivery of full power within a single four rack space chassis.



Passive Speakers

CS Series

The CS series is a purposely designed 2-way range of passive loudspeakers with subtle inobtrusive aesthetics, aimed at small to large corporate events and installations where a discreet presentation is paramount. The CS series offer exceptional audio quality, particularly with speech and live vocal content. Rental companies are presented with an exceptionally flexible and efficient product with a comprehensive range of rigging options that use simple attach/release brackets for an ultra-quick set-up.



CS6

The CS6 is a compact high quality 2-way passive speaker designed to present exceptional speech clarity from a conservative low profile Baltic Birch enclosure. Finished in KV2's rugged touring paint finish the CS6 can be quickly and easily stand mounted or suspended using the extensive range of CS attachments and brackets. The angled cabinet design allows for deployment as a micro monitor, whilst equally at home in fixed installations where discreet solutions are required.



CS8

The CS8 is a compact 2-way passive speaker offering the same exceptional speech clarity as the CS6 but with added low frequency extension. As such, the CS8 can also provide excellent musical reproduction for both corporate events and installations. The low profile, multi-angled Baltic Birch cabinet design presents a range of positioning options and the excellent high gain to low feedback properties mean the CS8 can be used very effectively as a compact vocal reference monitor.



CS12

The CS12 is a high-quality 2-way passive speaker that provides unmatched clarity and definition in a simple elegant package. Utilizing the same 3" NPVD large format compression driver found in KV2's flagship VHD series, the CS12 takes this performance and adds the CS range of benefits including selectable input switching, for running two channels down the same cable, ergonomic recessed handles, quick rigging options and KV2's rugged touring paint finish for long term protection on the road.



Active Speakers

EX Series

There are lots of powered speakers, but at KV2 Audio building an active speaker goes beyond bolting a Class D amplifier to the back of a box. Precisely selected amplifier topologies have been designed to deliver power through a unique LF amplifier for perfect control of the woofer, working alongside an HF amplifier implementing a discreet, classic class AB push-pull topology and an Intermodulation Distortion (IMD) restricting output transformer. Our EX Subwoofers each use a version of our proprietary high efficiency, high current switching amplifiers delivering efficiency of over 90% and offering incredibly high quality bass performance and total flexibility from standalone, small footprint cabinets.



EX6

The EX6 is a 2-way full-range, compact active speaker system producing output that defies its size. With amazing clarity for musical reproduction the EX6 is perfect for discreet installations or audio-visual presentations where sound quality is paramount but size also matters. The EX6 features state of the art components including an NPVD compression driver, 6" Trans Coil woofer and complete on-board control with electronic crossovers, phase alignment, equalization and speaker protection integrated into the EX6's amplifier module.



EX10

The EX10 is a 2-way full-range, high-output active speaker system. Despite its 10" woofer and remarkably small footprint it successfully takes on many larger 12" models and is favored by audio-visual and rental companies all over the world for its sheer quality and tremendous output. On-board electronics ensure fast, easy set up and complete control with electronic crossovers, phase alignment, equalization and speaker protection integrated into the EX10's amplifier module. The EX10 can also be used as a floor monitor.



EX12

The EX12 further builds on the success of the EX6 and EX10 by implementing the revolutionary 3" NPVD large format compression driver found in our flagship VHD range of products. This makes for one of the most perfectly balanced and accurate 2-way active boxes available on the market today. Complete onboard control courtesy of electronic crossovers, phase alignment, equalization and speaker protection are all integrated into the EX12's amplifier module. The EX12 can also be used as a floor monitor.



EX15

The EX15 introduces a 3-way design to the active EX loudspeaker range and incorporates a unique coaxial 15" transducer with a 1.75" Nitride Titanium Compression Driver on a wide dispersion 80° horizontal by 60° vertical horn. Whilst most coaxial speakers will try to cover the full frequency range, the EX15's coaxial driver only covers bass and high frequencies leaving the all-important mid-range to a horn loaded 6" neodymium speaker. This allows the 15" to deliver accurate and deep bass, an area in which it excels, rather than trying to also reproduce a compromised mid-range above its natural frequency window achieving optimum speed and dynamic musical performance.



EX26

The EX26 is a unique 2-way full-range active loudspeaker system that provides superb vocal intelligibility and high quality musical reproduction. Its 100° by 100° horn allows for wide, even coverage making it ideal for audio-visual presentations, Houses of Worship, meeting rooms and various other applications where high quality speech reproduction is required. With a neodymium compression driver and two 6” neodymium mid - bass woofers the EX26 is a compact, aesthetically pleasing and easily portable solution that also excels as an ideal under balcony solution when used in its horizontal orientation.



EX1.2MkII

The EX1.2MkII is a compact single 12” active subwoofer system. With an efficient passive cooling system the EX1.2MkII – like all KV2 Audio products - boasts output that belies its compact, low profile cabinet size. Its dimensions make it ideal for discreet installations, as it can be installed either horizontally or vertically under seating and in furniture surrounds, or as a portable solution for corporate applications.



EX1.5

The EX1.5 is a compact active subwoofer system featuring a single 15” neodymium woofer and a 500-watt high efficiency power amplifier with an efficient passive cooling system. Offering a peak SPL in excess of 133dB, the EX1.5 produces considerable output, yet in true KV2 style retains a small footprint. The EX1.5 can be deployed in multiples giving a compact yet scalable high output subwoofer solution.



EX1.8

The EX1.8 is a high output active subwoofer housing a revolutionary VHD technology 18” neodymium woofer. The EX1.8 features an impressive 1000-watts of power courtesy of KV2 Audio’s switching amplifier technology and provides a very firm foundation on which to build a powerful EX system, or as a standalone subwoofer to enhance any existing system.



EX2.2

The EX2.2 is a compact high output active double 12” bass module. Like the other subwoofers in the EX range on-board electronics include a stereo crossover with high pass outputs and full overdrive protection. Featuring KV2 Audio’s switching amplifier technology, precision manufactured woofer designs and a high efficiency, twin chamber acoustic design, the EX2.2 delivers tight, fast, controlled bass response at very high output levels from a small cabinet footprint.

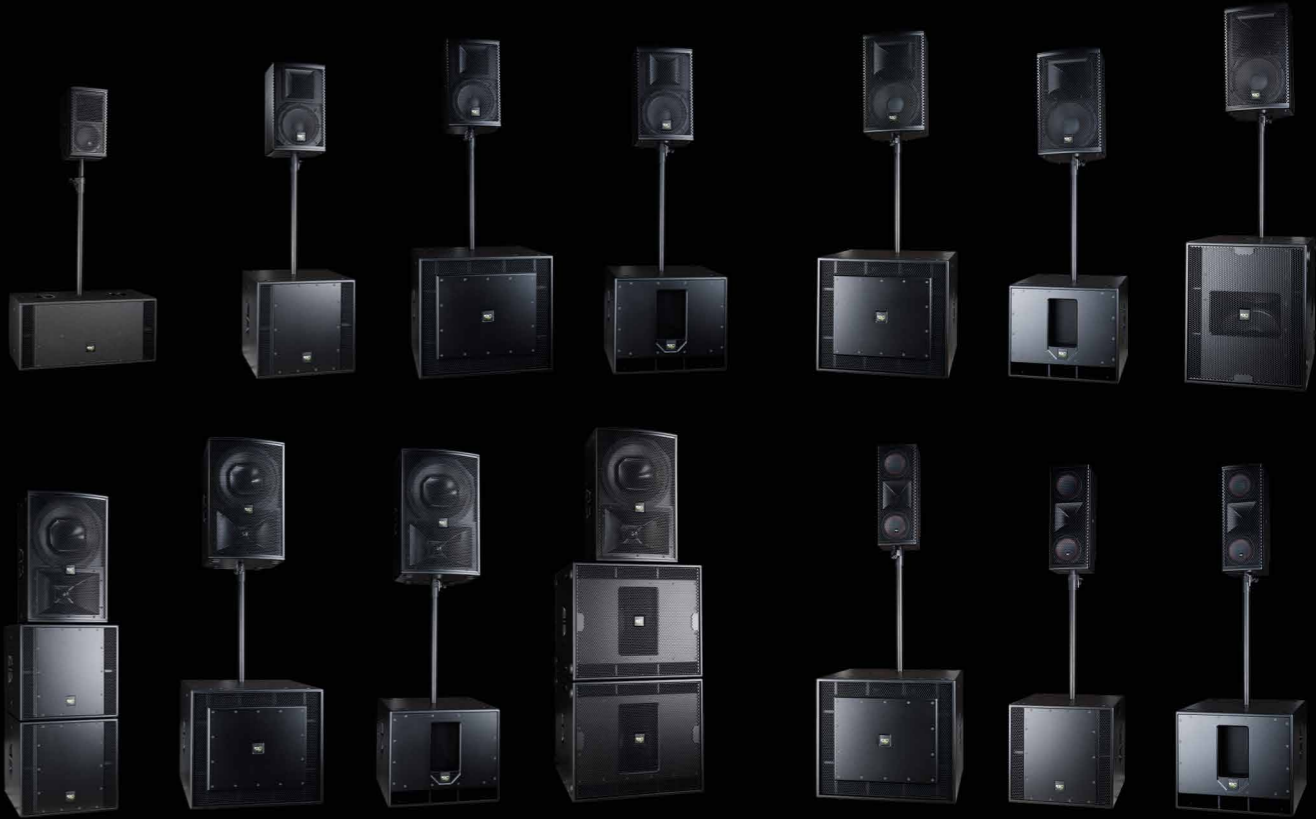


EX2.5MkII

The EX2.5MkII is a double 15” subwoofer and the ‘active’ brother of the ES2.6 passive bass module. It provides real depth and power where high bass output is required. The product uses the same low frequency amplifier found inside the EPAK2500/2500R and features in-built stereo crossovers, high pass outputs, and full overdrive protection. The EX2.5MkII also has the capability to power an additional ES2.6 subwoofer at the same time, directly from its own amplifier via a dedicated output socket.



Versatility, Configurability - EXtra Flexibility.



Stage Monitors

ESM Series

For years people have been asking KV2 to produce foldback monitors that had the same sound characteristics as EX and ESD ranges. Many foldback wedges utilize on board active technology or bi-amping and external processing to achieve optimum output. In developing the ESM series of stage monitors KV2 implemented the same unique revolutionary analog delay line circuit used in the ESD series to provide time alignment and phase correction passively, offering performers on stage the same incredible experience as the audience members without the need for expensive external processors.



ESM26

The ESM26 is a purpose built stage monitor with incredible clarity and presence, especially in the all-important vocal range achieved by incorporating two high quality 6" drivers and a 1.75" compression driver on a 100° by 100° horn. The ESM26 utilizes KV2's revolutionary passive delay line technology for optimum output and feedback rejection. A full width bass port along the bottom of the cabinet couples with the floor to deliver bass response comparable to monitors twice its size.



ESM12

The ESM12 is a 2-way full-range, low profile passive monitoring solution with a 12" trans-coil neodymium woofer and the same 3" NPVD large format compression driver found in our flagship VHD products. Available as a left or right version, the ESM12 also utilizes KV2's revolutionary passive delay line for optimum output and feedback rejection. Housed in a professional Baltic Birch cabinet with a protective Polymer coating and heavy-duty grille, the ESM12 is designed to withstand the rigors of the road and can also be used as a traditional PA with the inclusion of a pole mount.



ESM312

The ESM312 is a very high output full-range low profile 3-way, passive monitoring solution with two bass reflex loaded 12" neo woofers, a single horn loaded 6" mid range woofer and a 1" compression driver. Housed in a professional robust Baltic Birch cabinet, with a protective Polymer paint coating and heavy-duty grille, the ESM312 can be utilized for all large scale stage monitoring applications, where quick and easy set up is required. The ESM312 is truly one of the most impressive monitoring solutions on the market today.



ESM312

High Output Full-range
3-Way Monitor



Processors

Processors

In keeping with our focus on the highest possible sound quality we also manufacture a number of electronic processors that integrate into both ours and other systems to provide the best achievable signal path from source to speaker.



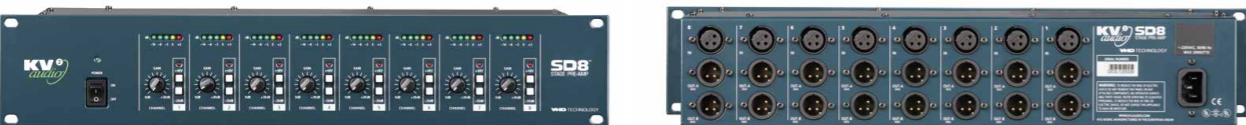
LD4

The LD4 is a 4-channel line driver designed to maintain audio signal integrity over long cable lengths. The LD4 eliminates standing waves and signal impurities resulting in the delivery of a high quality audio signal no matter what the cable length. Each channel features an individual transformer based power supply with insulated grounding. Circuitry is designed to provide excellent resolution of signal with very high dynamic content as found in live sound applications.



SD8

The SD8 is an 8-channel stage preamp designed with individual line drivers that maintain audio signal integrity over long cable lengths. The SD8 features eight independent mic inputs with gain control adjustment, -20dB pad and 48V phantom power. Each input has two outputs allowing signal routing to two separate locations such as front of house and monitoring consoles. A five bar LED display provides signal level information and a rotary knob provides 0db to +30dB of gain control.



SAC2

The SAC2 is a 2 in 4 out system controller and features a musical four-band equalizer that allows users to quickly shape the sound as required without affecting the overall linear response. Two notch filters per channel give further adjustment and enable the quick removal of dominant room resonances where necessary. The switchable crossover points of 70Hz or 120Hz can be independently applied to the Low and High Outputs or can be bypassed altogether and a transparent limiter feature is also included to maintain the desired level without affecting the quality or dynamic performance of the system. A truly impressive controller which when deployed anywhere in the signal chain gives an immediate improvement in definition, resolution and dynamic range.



SDD3

The SDD3 is a true technology statement by KV2. It utilizes our groundbreaking 20MHz PDM digital conversion process developed for time alignment applications throughout our speaker range. The SDD3 incorporates high quality line driver outputs allowing users to deliver pristine audio signal to delay speakers or under balcony fills over 100m from the source. The ultimate choice for the distribution of time corrected audio signal, the SDD3 has two Super Digital channels that will deliver up to 400 milliseconds of delay as well as a third channel with up to 10 milliseconds of delay specifically for setting up cardioid subwoofers.



COMPEX

Using KV2's Super Analog technology the COMPEX is a signal processor designed to optimize poor quality recordings for playback at high volume levels through the use of an optical audio compressor, with level dependent filters that reduce unpleasant high frequency distorted signals from bad signal sources and recordings. The COMPEX features a very high quality harmonics expander, which adds harmonic content to the depleted high frequencies in such recordings.



VHD PRE-EQ

The design of the VHD PRE-EQ is based on years of experience in presenting KV2 Audio systems using our associated electronics. The VHD PRE-EQ includes a single microphone input, two switchable stereo line inputs (balanced XLR, RCA / internal DAC) and A/B switchable master outputs equipped with left/right pan, mono summing and master volume. The preamp also features direct summing inputs for combining multiple preamps in mixing applications. The microphone input is equipped with a tuneable or preset HPF, Insert, and 4-band EQ. The stereo line inputs share a revolutionary George Krampera 8- band EQ, whilst the internal USB DAC operates up to a sample rate of 384KHz/24bit. Great emphasis was placed on maintaining the highest possible sound quality.



KV2's 500 SERIES

KV2's 500 SERIES

Over recent years, more and more artists and producers have turned to the superior audiophile quality of analog plugins. Requiring a modular, portable configuration to improve workflow, the 500 Series has emerged as the go-to solution in this sector. With an opportunity to share the innovative and revolutionary work of George Krampera and his engineering team, KV2 bring you a selection of exceptional audio tools for the 500 Series that offer, not only Class A circuitry with some of the lowest distortion figures in their field, but also brand new radical approaches to age old audio problems.

Designed with both the live engineer and studio engineer in mind, our patent pending compression system, featured in the TCL, offers one of the most natural and musical compression solutions in the world today. Whilst the aural enhancing filters of a QD8 offer an instant improvement to any mastering project, instrumental / vocal sub mix, or main front of house system equalization within seconds.

A culmination of KV2's journey to offer the most dynamic, natural and accurate reproduction of the source, the results delivered by our 500 Series products are something very special.

TCL - Superior RMS - Audio Thermo-Compressor with Limiter

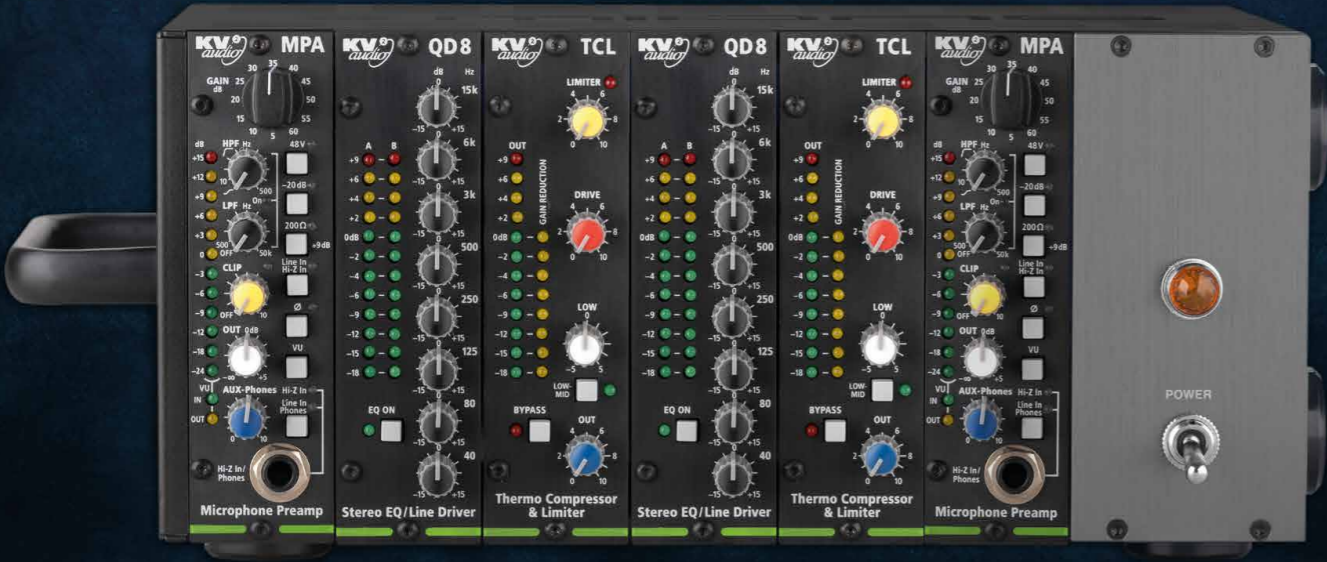
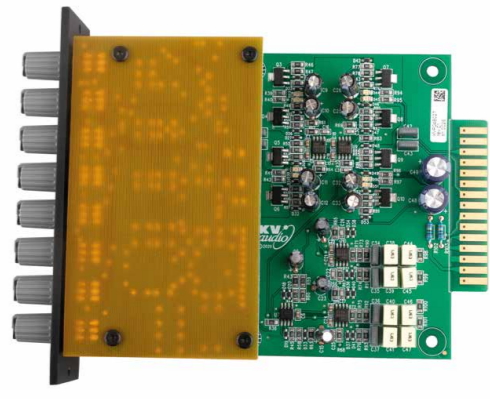
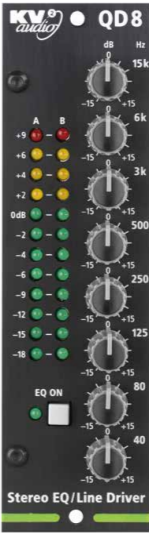
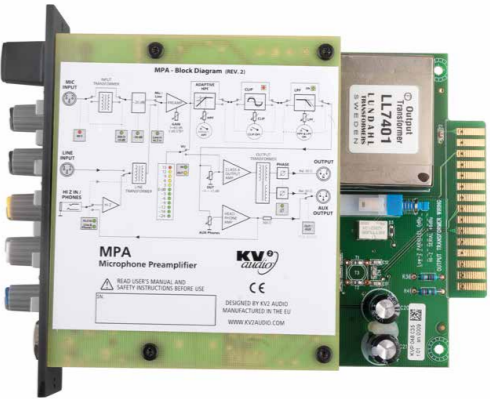
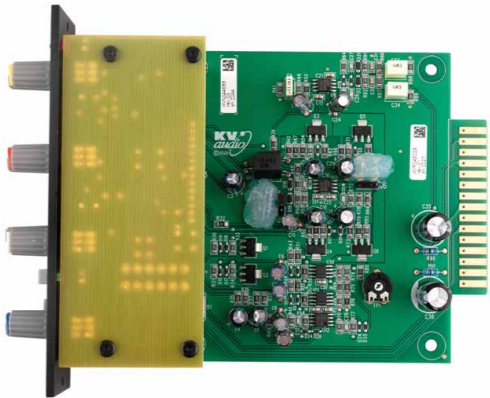
The TCL is an audio compressor featuring a superior natural RMS detector with a dynamic voice bass balance control and an output controlled by a patent pending thermo-dependent level compressor. Utilizing the speed of light to retain its dynamic content, the result is an incredibly musical, highly effective, yet almost invisible compression which minimises the proximity effect of microphones, adding warmth and depth as required, whilst combatting the problems often associated with poor microphone technique.

MPA - Microphone Preamplifier

A very high definition microphone and musical preamplifier with ultimate Class-A circuitry and a hand wound transformer balanced output. The preamplifier features tuneable high and low pass filters with an adjustable limiter, a stepped gain selector to allow precise repeatability of settings and a transformer isolated high-impedance line input. An additional transformer balanced output means a number of these units can be used to make a multi-channel stage preamp, for splitting FOH and monitoring outputs, or for broadcast and recording duties -delivering them all through line drivers in pristine audio quality. A headphone or third auxiliary output completes this feature rich unit.

QD8 - Stereo 8-band Equaliser with Line Driver

A revolutionary George Krampera 8-band Equaliser specifically designed to highlight a desired band without adversely affecting the overall sonic landscape. The frequency bands and filter types have been precisely chosen after extensive research, to perfectly align with the science of human hearing and our perception of achieving the ultimate spectral balance. The QD8 is a stereo unit also featuring line drivers to deliver pristine audio quality and maintain audio signal integrity over long cable lengths.



DI Boxes

JK Series

KV2 Audio's JK Series of DI Boxes and Audio Tools provide the ultimate solution in transferring unbalanced signals to balanced signals. They deliver crystal clear, distortion-free audio from any source over greater distances. KV2 has optimized the use of phantom power in the JK series with a switching power supply, providing a huge 20-volts of peak power on the internal rails. This allows the JK Series to deliver 50 Ohms on the XLR output giving true line driver capability. With line drivers delivering a high quality balanced signal on a low impedance output this gives the JK Series the ability to deliver greater audio integrity and output over any cable length and up to four times further than it's nearest competitor. It also means far greater headroom - nearly double that of any other phantom powered unit.



JK1

The JK1 features two 1/4" jack inputs with a mix or parallel function, a fixed low cut filter and 15dB pad, as well as Phase Shift and Ground Lift switches. The JK1 is ideal for connection of single keyboards, guitars and instrument amplifier outputs or combining two inputs via the mix function.



JK2

The JK2 features two 1/4" jack inputs with parallel monitor outputs as well as RCA inputs. The JK2 has two completely separate channels and can be used with two different instruments, or stereo keyboards and other two channel sources such as laptops, computers and tablets. The JK2 features a variable pad, Phase Shift and Ground Lift switch.



JKA

The JKA is a dedicated DI for acoustic instruments. The JKA features a high-impedance 1/4" jack input capable of receiving signal from all types of pick-ups. A +10dB gain boost is available for low-level instruments. The JKA also features a tunable notch filter for eliminating the resonant frequency in an acoustic instrument, reducing feedback issues.



JKP

The JKP serves as a universal passive DI box with low output impedance. The JKP features one XLR input and two 1/4" jack inputs in parallel. The JKP is designed for multiple instrument connection such as keyboards, guitars and instrument amplifiers outputs. The JKP also features phantom power supply pass-through for condenser microphone connection and output signal Line Driving.



JKT

The JKT is the perfect tool for checking and tuning PA systems. Phantom powered, it has one combined input/output XLR and one combined XLR and 1/4" jack output. The JKT delivers a full range of tones from 20Hz through to 30KHz, as well as both White and Pink Noise.



Technical Specifications

VHD5.0 & VHD8.10

Max SPL Long-term	Max SPL Peak	-3dB Response	-10dB Response	Full Range mode -3dB Response	Crossover Point	Dimensions H/W/D	Weight
147dB	153dB	70Hz to 20kHz	45Hz to 22kHz	50Hz to 20kHz	70Hz, 400Hz, 2.0kHz	VHD5.0 / 1125mm (44.29") x 1110mm (43.7") x 500mm (19.69") VHD8.10 / 640mm (25.20") x 1110mm (43.7") x 500mm (19.69")	VHD5.0 / 151kg (332.2lbs) VHD8.10 / 92 kg (202.4lbs)
	Max SPL Long-term	Max SPL Peak	-3dB Response	-10dB Response	Crossover Point	Dimensions H/W/D	Weight
VHD5.1	135dB	138dB	55Hz to 22kHz	45Hz to 30kHz	400Hz, 2.5kHz	830 mm (32.68") x 1110 mm (43.70") x 350 mm (13.78")	78 kg (171.96lbs)

VHD5000	
Number of Channels	1
Rated Continuous Power	High Frequency 1 - 300W / High Fre. 2 - 600W / Mid Fre. - 1500W
Input Sensitivity	1.55V RMS
Rack mountable	YES, 4RU
Remote Control	K-NET, Ethernet
Operating Voltage	195V to 260V AC

VHD5100	
Number of Channels	2 (Fill + DownFill)
Rated Continuous Power	High Frequency - 100W / Mid Fre. - 200W / Low Fre. - 1000W
Input Sensitivity	1.55V RMS
Rack mountable	YES, 4RU
Remote Control	K-NET, Ethernet
Operating Voltage	115V / 230V / 250V

VHD Series

	Max SPL Long-term	Max SPL Peak	-3dB Response	-10dB Response	Crossover Point	Dimensions H/W/D	Weight
VHD2.0	139dB	145dB	100Hz to 22kHz	85Hz to 30kHz	100Hz, 450Hz, 2.2kHz	933 mm (36.72") x 700 mm (27.55") x 495 mm (19.48")	70 kg (154.0lbs)
VHD1.0	134dB	140dB	100Hz to 22kHz	85Hz to 30kHz	100Hz, 450Hz, 2.2kHz	660 mm (25.98") x 700 mm (27.55") x 495 mm (19.48")	45 kg (99lbs)
VHD2.16	143dB (4x VHD2.16)	149dB (4x VHD2.16)	37Hz to 100Hz	32Hz to 130Hz	70Hz to 130Hz	600 mm (23.62") x 700 mm (27.55") x 750 mm (29.52")	65 kg (143lbs)
VHD2.18J	136dB	142dB	32Hz to 200Hz	28Hz to 250Hz	70Hz to 150Hz	570 mm (22.44") x 1080 mm (42.52") x 800 mm (31.5")	93 kg (205lbs)
VHD4.18	146dB (4x VHD4.18)	152dB (4x VHD4.18)	36Hz to 100Hz	31Hz to 130Hz	70Hz to 130Hz	600 mm (23.62") x 700 mm (27.55") x 750 mm (29.52")	52 kg (114.4lbs)
VHD1.21	135dB (2x VHD1.21)	141dB (2x VHD1.21)	29Hz to 100Hz	23Hz to 130Hz	70Hz to 120Hz	700 mm (27.55") x 700 mm (27.55") x 750 mm (29.52")	60 kg (132.0lbs)
VHD2.21	143dB (2x VHD2.21)	149dB (2x VHD2.21)	34Hz to 180Hz	28Hz to 240Hz	60Hz to 120Hz	700 mm (27.55") x 1080 mm (42.52") x 1200 mm (47.24")	155 kg (341.7lbs)
VHD4.21	147dB	153dB	34Hz to 180Hz	28Hz to 240Hz	60Hz to 120Hz	700 mm (27.55") x 1080 mm (42.52") x 1200 mm (47.24")	Active 175kg (386lbs) Passive 155kg (342lbs)

VHD2000	
Number of Channels	1
Rated Continuous Power	High Frequency - 300W / Mid Fre. - 1000W / Mid Bass Fre. - 1600W
Input Sensitivity	1.0V RMS
Rack mountable	YES, 4RU
Operating Voltage	115V / 230V / 250V
KV2 Control and Diagnostics Tool	NO

VHD5000S	
Number of Channels	2
Rated Continuous Power	Mid Bass Frequency - 2500W
Input Sensitivity	1.0V RMS
Rack mountable	YES, 4RU
Rack Control	K-NET, Ethernet
Operating Voltage	195V to 260V AC

SL Series

	Max SPL Long-term	Max SPL Peak	-3dB Response	-10dB Response	Crossover Point	Dimensions H/W/D	Weight
SL412	134dB	140dB	70Hz to 22kHz	58Hz to 30kHz	400Hz, 2.5kHz	670 mm (26.38") x 1080 mm (42.52") x 300 mm (11.81")	60 kg (132.28lbs)
SL6.10	129dB	135dB	50Hz to 500Hz	45Hz to 500Hz	70Hz to 200Hz	960 mm (37.8") x 1080 mm (42.52") x 350 mm (13.78")	84 kg (185.2lbs)

SL3000/SL3000D	
Number of Channels	2 (stereo)
Total Output Power	2x 1300W
Rated Continuous Power	High Frequency - 100W / Mid Fre. - 200W / Low Fre. - 1000W
Input Sensitivity	2.2V RMS (SL3000), 1.55V RMS (SL3000D)
Rack mountable	YES, 4RU
KV2 Control and Diagnostics Tool	YES (SL3000D)
Operating Voltage	115V / 230V / 250V

ESR Series

	Max SPL Long-term	Max SPL Peak	-3dB Response	-10dB Response	Crossover Point	Dimensions H/W/D	Weight
ESR106	128dB	134dB	60Hz to 20kHz	52Hz to 28kHz	450Hz, 2.4kHz	2048mm (80.629") x 250 mm (9.842") x 268 mm (10.551")	42,5 kg (93.7lbs)
ESR212	129dB	135dB	38Hz to 22kHz	33Hz to 28kHz	500Hz, 2.5kHz	1135 mm (44.69") x 447 mm (17.6") x 444 mm (17.48")	45 kg (99.2lbs)
ESR215MkII	132dB	138dB	35Hz to 22kHz	28Hz to 30kHz	400Hz, 2.5kHz	1515 mm (59.65") x 470 mm (18.50") x 500 mm (19.69")	71 kg (156.53lbs)
ESR215S	132dB	138dB	37Hz to 22kHz	30Hz to 30kHz	400Hz, 2.5kHz	1509 mm (59.41") x 450 mm (17.72") x 400 mm (15.75")	69 kg (152.12lbs)

ESR2800/ESR2800D	
Number of Channels	2 (stereo)
Total Output Power	2x 1300W
Rated Continuous Power	High Frequency - 100W / Mid Fre. - 200W / Low Fre. - 1000W
Input Sensitivity	1.55V RMS
Rack mountable	YES, 4RU
KV2 Control and Diagnostics Tool	YES (ESR2800D)
Operating Voltage	115V / 230V / 250V

ESR2600D	
Number of Channels	2 (stereo)
Total Output Power	2x 1300W
Rated Continuous Power	High Frequency - 100W / Mid Fre. - 200W / Low Fre. - 1000W
Input Sensitivity	1.55V RMS
Rack mountable	YES, 4RU
KV2 Control and Diagnostics Tool	YES
Operating Voltage	115V / 230V / 250V

ESR3000MkII/ESR3000D	
Number of Channels	2 (stereo)
Total Output Power	2x 1300W
Rated Continuous Power	High Frequency - 100W / Mid Fre. - 200W / Low Fre. - 1000W
Input Sensitivity	2.2V RMS (ESR3000MkII), 1.55V RMS (ESR3000D)
Rack montable	YES, 4RU
KV2 Control and Diagnostics Tool	YES (ESR3000D)
Operating Voltage	115V / 230V / 250V

Technical Specifications

ES Series

	Max SPL Long-term	Max SPL Peak	-3dB Response	-10dB Response	Crossover Point	Dimensions H/W/D	Weight
ES1.0	131dB	137dB	130Hz to 20kHz	85Hz to 28kHz	130Hz, 500Hz, 2.5kHz	700 mm (27.55") x 450 mm (17.71") x 450 mm (17.71")	34 kg (74.8lbs)
ES1.5	127dB (134dB - 3x ES1.5)	133dB (140dB - 3x ES1.5)	40Hz to 130Hz	36Hz to 130Hz	130Hz	700 mm (27.55") x 450 mm (17.71") x 450 mm (17.71")	30.8 kg (67.9lbs)
ES1.8	131dB (136dB - 2x ES1.8)	137dB (142dB - 2x ES1.8)	37Hz to 130Hz	33Hz to 130Hz	70Hz to 130Hz	600 mm (23.62") x 700 mm (27.55") x 750 mm (29.52")	55,6 kg (121.2lbs)
ES2.5	134dB	140dB	38Hz to 130Hz	34Hz to 130Hz	70Hz to 130Hz	600 mm (23.62") x 700 mm (27.55") x 750 mm (29.52")	74,7 kg (163.1lbs)
ES2.6	132dB (137dB - 2x ES2.6)	138dB (143dB - 2x ES2.6)	38Hz to 130Hz	34Hz to 130Hz	70Hz to 130Hz	600 mm (23.62") x 700 mm (27.55") x 750 mm (29.52")	74,7 kg (163.1lbs)

EPAK2500

Rated Continuous Power	High Frequency - 100W / Mid Fre. - 200W / Mid Bass Fre. - 600W Low Fre. - 1600W
Input Sensitivity	1.0V RMS
Rack	YES, 4RU
KV2 Control and Diagnostics Tool	NO
Operating Voltage	115V / 230V / 250V
KV2 Control and Diagnostics Tool	NO

EPAK2500R

Rated Continuous Power	High Frequency - 100W / Mid Fre. - 200W / Mid Bass Fre. - 600W Low Fre. - 1600W
Input Sensitivity	1.0V RMS
Rack	YES, 4RU
KV2 Control and Diagnostics Tool	NO
Operating Voltage	115V / 230V / 250V
KV2 Control and Diagnostics Tool	NO

ESD Series

	Max SPL Long-term	Max SPL Peak	-3dB Response	-10dB Response	Crossover Point	Dimensions H/W/D	Weight
ESD Cube	110dB	116dB	90Hz to 18kHz*	-	no - full range	154 mm (6") x 154 mm (6") x 163 mm (6.4")	3 kg (6.6lbs)
ESD5	109dB	115dB	125Hz to 22kHz	74Hz to 28kHz	3.0kHz	150 mm (5.9") x 316 mm (12.4") x 224.7 mm (8.84")	7 kg (15.4lbs)
ESD25	118dB	124dB	120Hz to 22kHz	72Hz to 28kHz	3.0kHz	150 mm (5.9") x 442 mm (17.4") x 260 mm (10.24")	9.6 kg (21.2lbs)
ESD6	117dB	123dB	68Hz to 20kHz	51Hz to 28kHz	2.0kHz	390 mm (15.35") x 220 mm (8.66") x 240 mm (9.45")	9.5 kg (20.9lbs)
ESD8	120dB	126dB	80Hz to 20kHz	62Hz to 28kHz	2.2kHz	456mm (17.95") x 260 mm (10.23") x 260 mm (10.23")	13 kg (28.6lbs)
ESD10	125dB	131dB	65Hz to 20kHz	56Hz to 28kHz	1.8kHz	514 mm (20.32") x 310 mm (12.20") x 324 mm (12.76")	16.5 kg (36.38lbs)
ESD12	127dB	133dB	55Hz to 22kHz	50Hz to 30kHz	1.2kHz	619 mm (24.37") x 368 mm (14.48") x 368 mm (14.48")	23 kg (50.7lbs)
ESD15	126dB	132dB	48Hz to 18kHz	45Hz to 28kHz	500Hz, 2.5kHz	700 mm (27.55") x 450 mm (17.71") x 450 mm (17.71")	35 kg (77.2lbs)
ESD36	122dB	128dB	65Hz to 25kHz	57Hz to 30kHz	600Hz, 2.5kHz	730.5 mm (28.76") x 220 mm (8.66") x 244 mm (9.60")	17.6 kg (38.8lbs)
ESD1.10	121dB	127dB	40Hz to 150Hz	37Hz to 170Hz*	80Hz to 150Hz	335 mm (13.2") x 530 mm (20.9") x 500 mm (19.7")	21.3 kg (46.96lbs)
ESD1.12	124dB	130dB	38Hz to 150Hz	34Hz to 170Hz	80Hz to 150Hz	379.5 mm (14.94") x 800 mm (31.49") x 400 mm (15.75")	26.7 kg (58.8lbs)
ESD1.15	127dB	133dB	37Hz to 150Hz	34Hz to 170Hz	80Hz to 150Hz	510 mm (20.08") x 550 mm (21.65") x 570 mm (22.44")	34.2 kg (75.4lbs)
ESD1.18	131dB	137dB	30Hz to 150Hz	28Hz to 170Hz	70Hz to 150Hz	612 mm (24.1") x 700 mm (27.55") x 750 mm (29.52")	52 kg (114.7lbs)

**with ESP1000 equalization*

CS Series

	Max SPL Long-term	Max SPL Peak	-3dB Response	-10dB Response	Crossover Point	Dimensions H/W/D	Weight
CS6	118dB	124dB	145Hz to 20kHz	90Hz to 28kHz	4.2kHz	400 mm (15.75") x 185 mm (7.28") x 182 mm (7.17")	8,3 kg (18.26lbs)
CS8	120dB	126dB	80Hz to 20kHz	62Hz to 28kHz	2.2kHz	455 mm (17.91") x 265 mm (10.43") x 260 mm (10.24")	13 kg (28.6lbs)
CS12	127dB	133dB	55Hz to 22kHz	50Hz to 30kHz	1.2kHz	625 mm (24.61") x 374 mm (14.72") x 369 mm (14.53")	24 kg (52.8lbs)

ESM Series - Stage Monitors

	Max SPL Long-term	Max SPL Peak	-3dB Response	-10dB Response	Crossover Point	Dimensions H/W/D	Weight
ESM26	123dB	129dB	70Hz to 16kHz	54Hz to 28kHz (half space)	2.5kHz	337.3 mm /13.28" x 370 mm /14.57" x 454.5 mm /17.89"	15 kg (33.8lbs)
ESM12	127dB	133dB	55Hz to 22kHz	41Hz to 30kHz (half space)	1.2kHz	368 mm (14.48") x 606 mm (23.86") x 368 mm (14.48")	23 kg (50.7lbs)
ESM312	133dB	139dB	40Hz to 20kHz	35Hz to 20kHz (half space)	400Hz, 2kHz	398 mm (15.669") x 585 mm (23.032") x 553 mm (21.76")	42 kg (92.59lbs)

ESP1000

-1dB Response	3Hz to 50kHz / Flat Setup
Number of Channels	4
Total Output Power	1000W
Input Sensitivity	1.55V RMS
Rack mountable	YES, 2RU
KV2 Control and Diagnostics Tool	NO
Out. Power 4Ω - 1 channel / 2 channels loaded	250W (RMS)
Minimum load impedance per channel	4Ω
Operating Voltage	115V / 230V / 250V

ESP2000/ESP2000D

-1dB Response	3Hz to 40kHz
Number of Channels	2
Total Output Power	2000W
Input Sensitivity	1.0V RMS (ESP2000), 1.55V RMS (ESP2000D)
Rack mountable	YES, 2RU
KV2 Control and Diagnostics Tool	YES (ESP2000D)
Out. Power 2Ω - 1 channel / 2 channels loaded	1000W / 800W (RMS)
Minimum load impedance per channel	2Ω
Operating Voltage	115V / 230V / 250V

ESP4000

-1dB Response	3Hz to 40kHz	KV2 Control and Diagnostics Tool	NO
Number of Channels	4	Out. Power 2Ω - 1 channel / 2 channels loaded	1000W / 800W (RMS)
Total Output Power	4000W	Minimum load impedance per channel	2Ω
Input Sensitivity	2.0V RMS	Operating Voltage	115V / 230V / 250V
Rack mountable	YES, 4RU		

EX Series

	Max SPL Long-term	Max SPL Peak	-3dB Response	-10dB Response	Crossover Point	Dimensions H/W/D	Weight
EX6	117dB	123dB	68Hz to 20kHz	62Hz to 28kHz	2.0kHz	395 mm (15.55") x 220 mm (8.66") x 274 mm (10.78")	12 kg (26.4lbs)
EX10	126dB	132dB	65Hz to 20kHz	55Hz to 28kHz	1.6kHz	514 mm (20.23") x 310 mm (12.20") x 326 mm (12.83")	22 kg (48.4lbs)
EX12	127dB	133dB	55Hz to 22kHz	45Hz to 30kHz	1.1kHz	596 mm (23.46") x 368 mm (14.49") x 368 mm (14.49")	29 kg (63.8lbs)
EX15	129dB	135dB	44Hz to 18kHz	38Hz to 22kHz	500Hz, 2.7kHz	700 mm (27.55") x 450 mm (17.71") x 450 mm (17.71")	43 kg (94,8lbs)
EX26	124dB	130dB	80Hz to 20kHz	65Hz to 28kHz	2.5kHz	570 mm (22.44") x 220 mm (8.66") x 274 mm (10.78")	16 kg (35.2lbs)
EX1.2MkII	124dB	130dB	38Hz to 120Hz	32Hz to 120Hz	120Hz	370 mm (14.57") x 800 mm (31.49") x 400 mm (15.75")	32 kg (70.5lbs)
EX1.5	127dB	133dB	38Hz to 120Hz	32Hz to 120Hz	120Hz	510 mm (20.08") x 550 mm (21.65") x 570 mm (22.44")	43kg (94,8 lbs)
EX1.8	131dB	137dB	30Hz to 125Hz	27Hz to 125Hz	125Hz	612 mm (24.1") x 700 mm (27.56") x 750 mm (29.52")	65 kg (143.3lbs)
EX2.2	130dB	136dB	45Hz to 125Hz	40Hz to 125Hz	125Hz	491 mm (19.33") x 594 mm (23.38") x 616 mm (24.25")	49 kg (107.8lbs)
EX2.5MkII	132dB (137dB -with Slave ES2.6)	138dB (143dB -with Slave ES2.6)	38Hz to 125Hz	34Hz to 125Hz	125Hz	711.5 mm (28.0") x 602.6 mm (23.72") x 750 mm (29.52")	97 kg (214lbs)

Technical Specifications

Processors

LD4	
-1dB Response	6Hz to 500kHz
Dynamic Range	>120dB
Total Harmonic Distortion	<0.0005%
Max. Output Voltage	14V / 7V (50Ω) RMS
Max. Output Current	450mA
Input Channels	4x

SD8	
-1dB Response	6Hz to 500kHz
Dynamic Range	>120dB
Total Harmonic Distortion	<0.0005%
Max. Output Voltage	14V / 7V (50Ω) RMS
Max. Output Current	450mA
Input Channels	8x

SAC2	
-1dB Response	20Hz to 40kHz
Total Harmonic Distortion	<0.005%
Max. Output Voltage	14V / 7V (50Ω) RMS
Max. Output Current	450mA
Input Channels	2
Input Impedance	20kΩ (balanced)
Signal Output Channels	4
Output Impedance	50Ω
Level Control	-15 / +10dB
System setup	Crossover / Bypass
Gain	-10 / +10dB

SDD3	
-1dB Response	2Hz to 40kHz
-10dB Response	2Hz to 100kHz
Sampling Frequency	20MHz, PDM
Dynamic Range	>105dB
Total Harmonic Distortion	0.005%
Input Channels	2 Full range + 1 Subwoofer
Input Impedance	20kΩ (balanced)
Max. Input voltage	+14dBu
Signal Output Channels	2 Full range + 2 Subwoofer
Output Impedance	50Ω

COMPEX	
-3dB Response	20Hz to 100kHz
Dynamic Range	>130dB
Total Harmonic Distortion	0,001%
Input Channels	2
Input Impedance	20kΩ (balanced)
Signal Output Channels	2
Output Impedance	50Ω
Level Control	-10 / +10dB

Line input	Gain (50Ω) 0dB
Signal Output Channels	4x
Output Impedance	50Ω
Operating Voltage	115V / 230V
Dimensions H/W/D	44 mm (1.7"), 482.6 mm (19.0"), 202.3 mm (7.9")
Weight	2.9 kg (6.5lbs)

Mic input	0 to +30dB Gain, pad -20dB
Signal Output Channels	8x2
Output Impedance	50Ω
Operating Voltage	115V / 230V
Dimensions H/W/D	89.0 mm (3.0"), 482.6 mm (19.0"), 203 mm (7.9")
Weight	5.5 kg (12.1lbs)

Phase	0° / 180°
Crossover	70 / 120Hz, Butterworth 12dB/octave
High Pass Filter	20 / 40Hz
Equalization	4-band equalizer
Notch Filter	2 per channel
Loudness bass enhancement	+6dB @ 60Hz
Volume Limiter	Fast/Slow / -15 + 10dB
Operating Voltage	115V / 230V
Dimensions H/W/D	44.5 mm (1.75"), 483 mm (19.0"), 201 mm (7.9")
Weight	3.2 kg (7.05lbs)

Level Controls	-10 / +10dB
System setup	Normal / Cardioid mode
Delay Range	0.012ms to 393.216ms, step 0.003ms
Full Range Mode	2 channels
Phase	0° / 180°
High Pass Filter	OFF to 260Hz
Memory	30
Operating Voltage	115V / 230V
Dimensions H/W/D	44 mm (1.75"), 482.6 mm (19.0"), 203 mm (7.9")
Weight	3.6 kg (7.94lbs)

Harmonics	Drive, 0 to 10
Equalization	Level dependent
Indicators	2x 2 Level LED bar graphs
Threshold	∞ to -20dB
Ratio	1:3
Operating Voltage	115V / 230V
Dimensions H/W/D	44 mm (1.7"), 482.6 mm (19.0"), 198 mm (7.8")
Weight	2.7 kg (5.96lbs)

VHD PRE-EQ	
-3dB Response	10Hz to 120kHz
Total Harmonic Distortion	<0.0005%
Number of Channels	2x A/B - XLR
Max. Output Voltage	18dBu / 12dBu (50Ω) RMS
Max. Output Current	450mA
Input Channels	9
Input Impedance	2kΩ Mic / 20kΩ Balanced IN / 10kΩ RCA IN
Max. Input voltage	+26dBu
Mic input	Phantom power, -20dB, Input level, Phase, 4-band EQ
Line input	Balanced, DAC/RCA, ±20dB
DAC input	USB2.0, 384kHz/24bit DAC

KV2’s 500 SERIES

TCL - Superior RMS - Audio Thermo-Compressor with Limiter

-3dB Response	15Hz to 100kHz
Total Harmonic Distortion	<0.002%
Input Channels	1
Input Impedance	20kΩ
Max. Input voltage	+26dBu
Features	Limiter, BASS
Line input	Balanced
Signal Output Channels	1
Max. Output Voltage	18dBu (600Ω) RMS
Output Impedance	600Ω

MPA - Microphone Preamplifier

-3dB Response	10Hz to 100kHz
Total Harmonic Distortion	<0.002%
Input Channels	2
Input Impedance	2kΩ / 200Ω Mic (+9dB), 1MΩ Hi Z In
Max. Input voltage	+26dBu
Mic input	Phantom power, -20dB, Gain, Phase, LPF, HPF
Line input	Hi Z, Input transformer
Signal Output Channels	3 (Main, Aux , Phones)
Max. Output Voltage	18dBu (600Ω), 19dBu (50Ω) RMS
Output Impedance	6Ω

QD8 - Stereo 8-band Equaliser with Line Driver

-3dB Response	10Hz to 100kHz
Total Harmonic Distortion	<0.001%
Input Channels	2
Input Impedance	20 kΩ
Max. Input voltage	+26dBu
Signal Output Channels	2
Max. Output Voltage	18dBu (600Ω) RMS

Signal Output Channels	stereo A / B
Output Impedance	50Ω
Input Level Control	-∞ to +6dB
High Pass Filter	Vocal preset / 10Hz to 500Hz
Equalization	8-band EQ on Line, 4-band on Mic
Indicators	LED, VU meters
Power Connector	IEC 320
Operating Voltage	115V / 230V / 250V
Dimensions H/W/D	43.8 mm (1.72"), 482.6 mm (19.0"), 248 mm (9.76")
Weight	4.5 kg (10lbs)

Limiter	Adjustable
Drive	Adjustable
Bass	Adjustable
Output	Adjustable
Indicators	12 segment VU meter, 8 segment gain reduction
Bypass	Yes
Power Consumption	±120mA
Operating Voltage	±16V
API Series 500 format	One slot

Input Level Control	+5 to +60dB, 5dB step, total gain 74dB
High Pass Filter	Vocal preset / 10Hz to 500Hz
Low Pass Filter	500Hz to 50kHz
Clip	Adjustable
Indicators	LED, 12 segment VU meter
Phantom power	48V
Power Consumption	±250mA
Operating Voltage	±16V
API Series 500 format	One slot

Max. Output Current	300mA
Output Impedance	50Ω
Equalization	8-band EQ
Output	Line driver
Power Consumption	±160mA
Operating Voltage	±16V
API Series 500 format	One slot



The Future of Sound.
Made Perfectly Clear.

www.kv2audio.com